

How Early Childhood Intervention Works with Child Care Centers

What is Early Childhood Intervention?

Health and Human Services Early Childhood Intervention is a program that delivers intervention services to families with children who are age birth to 36 months and have developmental delays or disabilities.



Our staff includes:

- Early Intervention Specialists
- Occupational Therapists
- Physical Therapists
- Speech Therapists

Our staff have had a fingerprint-based criminal background check.

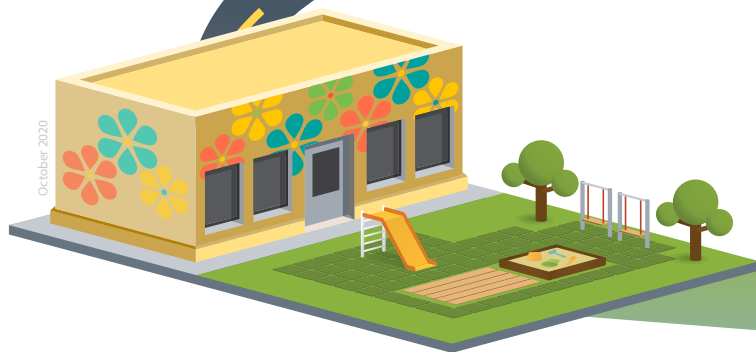


ECI goes to the child!



Why does ECI need to provide services in the child care center?

We deliver services where the child lives, learns, and plays. The child's family identifies the best place for services, which may include the child care center.



What happens during the ECI visit?

We provide services in the class with the teacher and the other children. We will help the teacher learn how to implement intervention activities with the child.

We can help build the social-emotional skills of all children in the classroom by working with the teacher to incorporate other children into the intervention activities.

We will schedule visits to work with the child at the most appropriate time based on the services they need while still respecting the teacher's class routines.



Our shared goal: teaching the child how to be successful in your classroom!

Find your local ECI program at hhs.texas.gov/eci or call the Health and Human Services Office of the Ombudsman at 877-787-8999.