



2018 Bond Program

Bond Sale

Final
Abilene ISD
 \$138,679,000 - Bond Election - 25 Year Repayment
 Pricing January 22, 2019

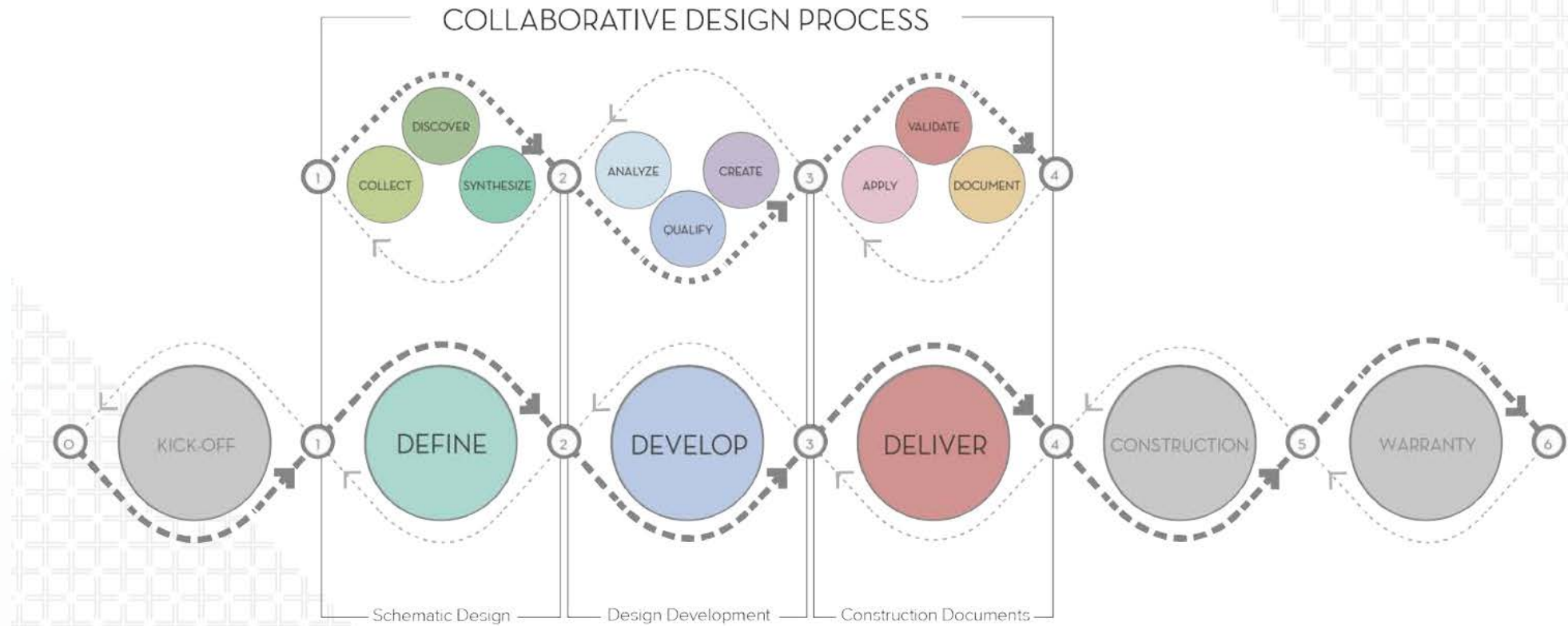
| A | B | C | D | E | F | G | H | I | J | K | L | M | N |
|--------|----------------------------------|--------|--------------------------|---------------------------------|---|---|---------------|---------------|----------------|--|---|---------------------------------------|--------|
| FYE | Taxable Assessed Valuation | Growth | Existing Debt Service | Less: State IFA/EDA Share | Existing Debt Net of EDA/ IFA Funding | \$126,865,000 * - Series 2019 2/26/2019 - 3.596% | | | | Less: Projected Series 2019 EDA Funding | WITH STATE FUNDING Net Debt Service | Calculated I&S Rate ⁽¹⁾ | FYE |
| 31-Aug | | | | | | Principal | Interest | Cap. Interest | Debt Service | | | | 31-Aug |
| 2018 | \$ 4,647,033,634 | | \$ 9,467,400 | \$ 1,957,058 | \$ 7,510,342 | | | | | - | \$ 7,510,342 | 0.1583 | 2018 |
| 2019 | 4,674,000,000 | 0.58% | 9,467,700 | 1,386,381 | 8,081,319 | \$ - | \$ - | \$ - | \$ - | - | 8,081,319 | 0.1624 | 2019 |
| 2020 | 4,674,000,000 | 0.00% | 9,467,125 | 1,339,405 | 8,127,720 | - | 8,426,897 | (930,000) | 7,496,897 | 81 | 15,624,536 | 0.3411 | 2020 |
| 2021 | 4,674,000,000 | 0.00% | 9,468,125 | 1,339,486 | 8,128,639 | 1,805,000 | 5,689,625 | - | 7,494,625 | - | 15,623,264 | 0.3411 | 2021 |
| 2022 | 4,674,000,000 | 0.00% | 9,470,250 | 1,339,847 | 8,130,403 | 3,165,000 | 5,565,375 | - | 8,730,375 | 1,234,783 | 15,625,995 | 0.3411 | 2022 |
| 2023 | 4,674,000,000 | 0.00% | 9,467,875 | 1,339,511 | 8,128,364 | 3,325,000 | 5,403,125 | - | 8,728,125 | 1,234,851 | 15,621,638 | 0.3410 | 2023 |
| 2024 | 4,674,000,000 | 0.00% | 9,227,425 | 1,305,492 | 7,921,933 | 3,495,000 | 5,232,625 | - | 8,727,625 | 1,234,780 | 15,414,778 | 0.3365 | 2024 |
| 2025 | 4,674,000,000 | 0.00% | 9,234,675 | 1,306,518 | 7,928,157 | 3,675,000 | 5,053,375 | - | 8,728,375 | 1,234,887 | 15,421,646 | 0.3367 | 2025 |
| 2026 | 4,674,000,000 | 0.00% | 8,295,375 | 1,173,626 | 7,121,749 | 3,865,000 | 4,864,875 | - | 8,729,875 | 1,235,099 | 14,616,525 | 0.3191 | 2026 |
| 2027 | 4,674,000,000 | 0.00% | 8,293,750 | 1,173,396 | 7,120,354 | 4,065,000 | 4,666,625 | - | 8,731,625 | 1,235,346 | 14,616,633 | 0.3191 | 2027 |
| 2028 | 4,674,000,000 | 0.00% | 8,298,625 | 1,174,086 | 7,124,539 | 4,270,000 | 4,458,250 | - | 8,728,250 | 1,234,657 | 14,618,133 | 0.3191 | 2028 |
| 2029 | 4,674,000,000 | 0.00% | 8,300,500 | 1,174,351 | 7,126,149 | 4,470,000 | 4,262,100 | - | 8,732,100 | 1,234,391 | 14,623,858 | 0.3193 | 2029 |
| 2030 | 4,674,000,000 | 0.00% | 8,295,500 | 1,173,644 | 7,121,856 | 4,650,000 | 4,079,700 | - | 8,729,700 | 1,235,074 | 14,616,482 | 0.3191 | 2030 |
| 2031 | 4,674,000,000 | 0.00% | 8,295,500 | 1,173,644 | 7,121,856 | 4,840,000 | 3,889,900 | - | 8,729,900 | 1,235,102 | 14,616,654 | 0.3191 | 2031 |
| 2032 | 4,674,000,000 | 0.00% | 8,294,875 | 1,173,555 | 7,121,320 | 5,035,000 | 3,692,400 | - | 8,727,400 | 1,234,749 | 14,613,971 | 0.3190 | 2032 |
| 2033 | 4,674,000,000 | 0.00% | 8,295,125 | 1,173,590 | 7,121,535 | 5,245,000 | 3,486,800 | - | 8,731,800 | 1,235,155 | 14,618,179 | 0.3191 | 2033 |
| 2034 | 4,674,000,000 | 0.00% | 8,297,875 | 1,173,980 | 7,123,895 | 5,455,000 | 3,272,800 | - | 8,727,800 | 1,234,805 | 14,616,890 | 0.3191 | 2034 |
| 2035 | 4,674,000,000 | 0.00% | 8,297,250 | 1,173,891 | 7,123,359 | 5,680,000 | 3,050,100 | - | 8,730,100 | 1,235,106 | 14,618,353 | 0.3191 | 2035 |
| 2036 | 4,674,000,000 | 0.00% | 8,297,375 | 1,173,909 | 7,123,466 | 5,910,000 | 2,818,300 | - | 8,728,300 | 1,234,876 | 14,616,890 | 0.3191 | 2036 |
| 2037 | 4,674,000,000 | 0.00% | | | | 6,155,000 | 2,577,000 | - | 8,732,000 | 1,235,399 | 7,496,601 | 0.1637 | 2037 |
| 2038 | 4,674,000,000 | 0.00% | | | | 6,405,000 | 2,325,800 | - | 8,730,800 | 1,235,230 | 7,495,570 | 0.1636 | 2038 |
| 2039 | 4,674,000,000 | 0.00% | | | | 6,700,000 | 2,030,200 | - | 8,730,200 | 1,235,145 | 7,495,055 | 0.1636 | 2039 |
| 2040 | 4,674,000,000 | 0.00% | | | | 7,005,000 | 1,722,600 | - | 8,727,600 | 1,234,777 | 7,492,823 | 0.1636 | 2040 |
| 2041 | 4,674,000,000 | 0.00% | | | | 7,330,000 | 1,399,250 | - | 8,729,250 | 1,235,010 | 7,494,240 | 0.1636 | 2041 |
| 2042 | 4,674,000,000 | 0.00% | | | | 7,705,000 | 1,023,375 | - | 8,728,375 | 1,234,887 | 7,493,488 | 0.1636 | 2042 |
| 2043 | 4,674,000,000 | 0.00% | | | | 8,100,000 | 628,250 | - | 8,728,250 | 1,234,869 | 7,493,381 | 0.1636 | 2043 |
| 2044 | 4,674,000,000 | 0.00% | | | | 8,515,000 | 212,875 | - | 8,727,875 | 1,234,816 | 7,493,059 | 0.1636 | 2044 |
| | | | \$ 166,532,325 | \$ 24,225,367 | \$ 142,306,958 | \$ 126,865,000 | \$ 89,832,222 | \$ (930,000) | \$ 215,767,222 | \$ 28,403,874 | \$ 329,670,305 | | |

Maximum: 0.3411
 Increase Above FY 2018 Rate: 0.1828

* Par amount net of premium, cost of issuance and underwriter's expenses.
 (1) Tax collection rate of 98%. Actual tax rate for fiscal years 2018 and 2019.

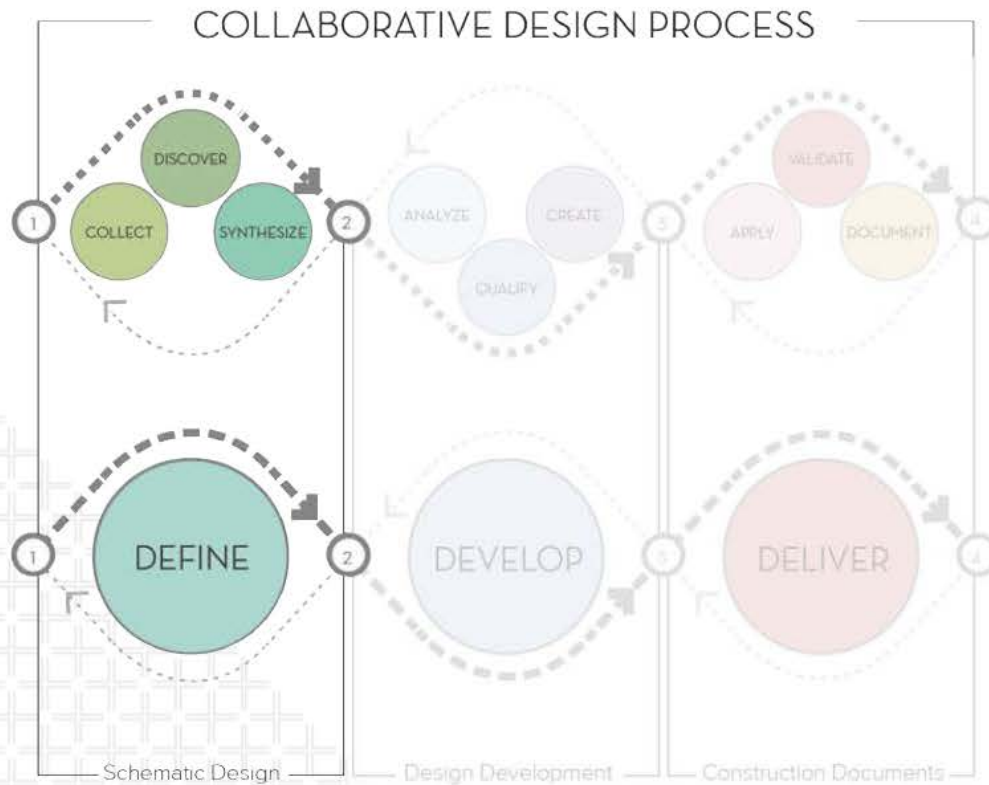


Project Design Process



Huckabee

Project Design Process



DEFINE

SCHEMATIC DESIGN

Definition and discovery are essential to the design process. To begin, we collect knowledge through research, observations of context, conversations and workshops.

We engage with you and your community to discover and uncover pertinent information which informs the design process.

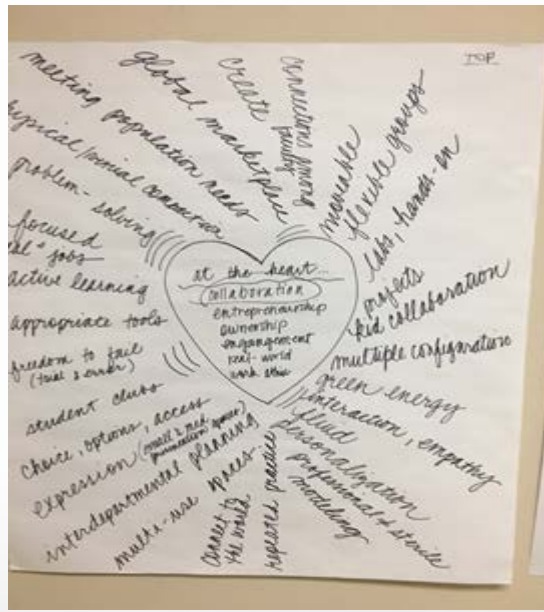
We consider existing standards, and if no precedents exist, we work with you to define and establish your brand, your criteria and your vision for educational delivery.

Huckabee

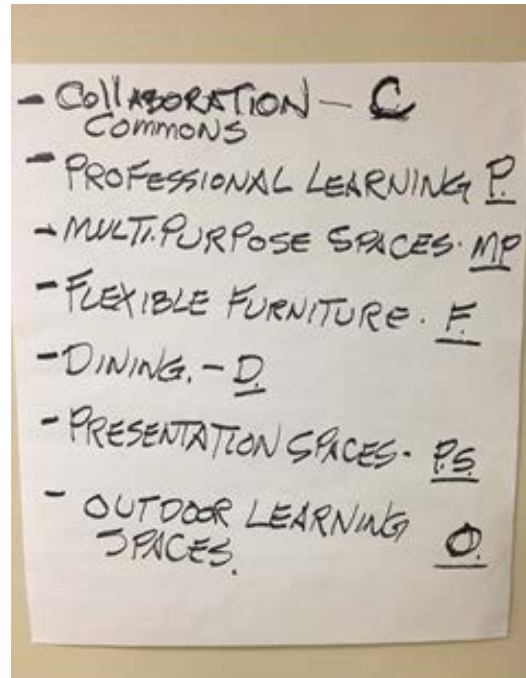
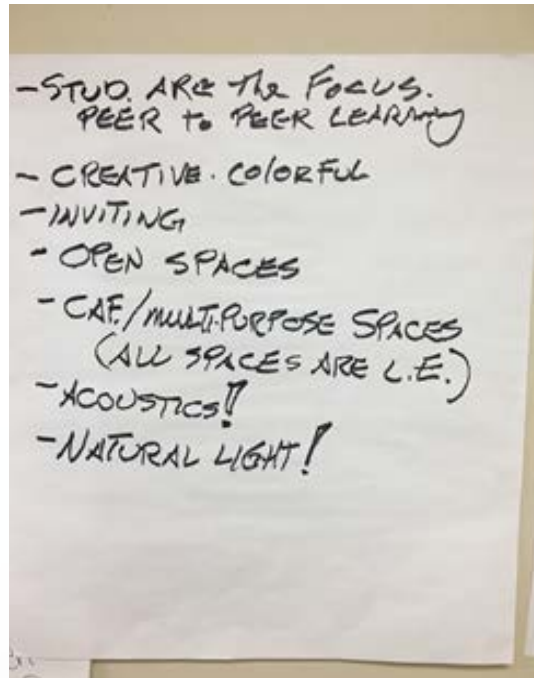
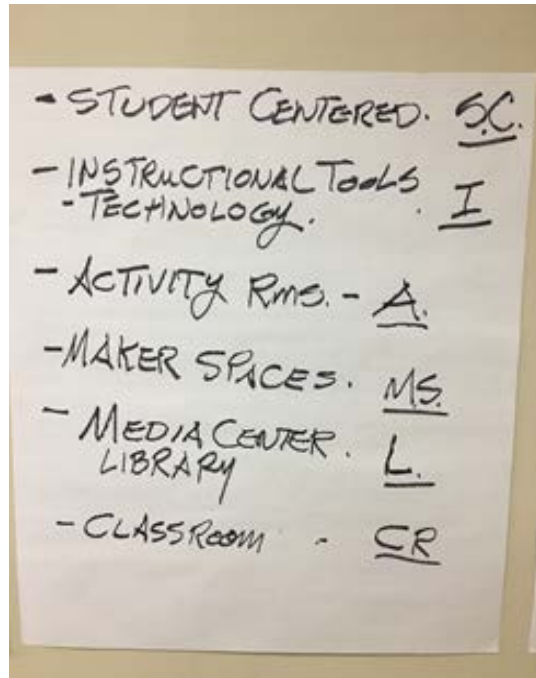
A large, open-plan office space with a high ceiling and exposed ductwork. The room is filled with people, some standing and talking, others sitting at tables. There are red modular seating areas in the foreground. The background shows a glass-walled area with the text 'MILITARY INTELLIGENCE' visible.



-
- A hand-drawn mind map centered on the word "VISION" inside a cloud. The branches radiating from the center are as follows:
- Safe & Secure**
 - Inspired**
 - Transparent**
 - Versatile**
 - Cultural Shift (Learning)**
 - Global Interactions**
 - age appropriately interactive**
 - Technology** (portable, virtual)
 - Multipurpose Spaces** (Open spaces, Quiet spaces)
 - Boundless**
 - Connected GO**
 - Flexible** (3D printed, 2D materials)
 - Collaboration** (small groups, virtual/physical)
 - Share-Community**
 - Creativity**
 - Timeless**
 - Endured** (Active, Engaged, Students, Staff)
 - Passive Supervision**



Austin & Taylor Elementary Schools

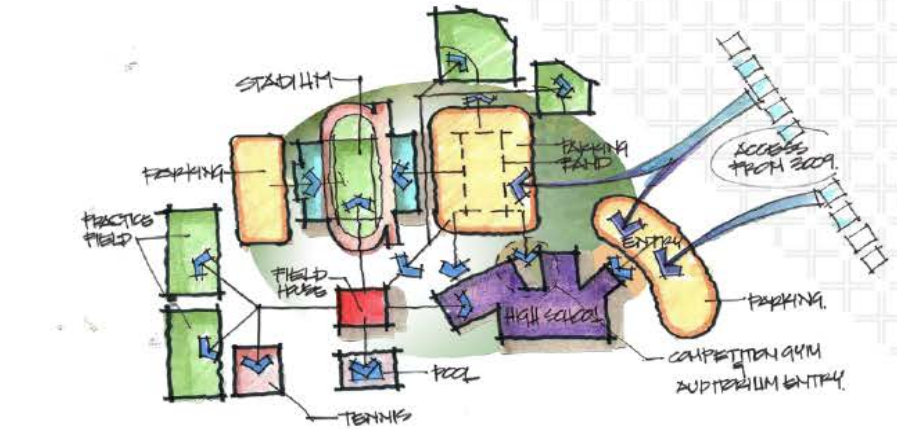
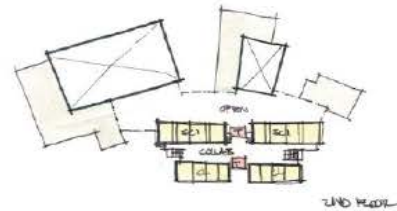
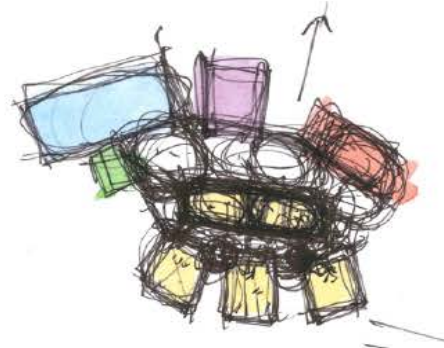
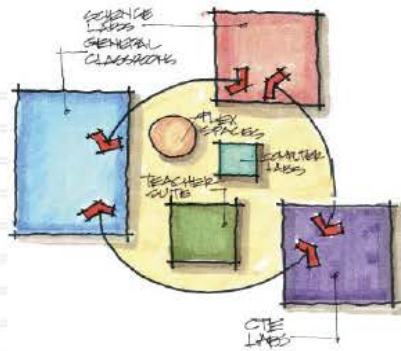
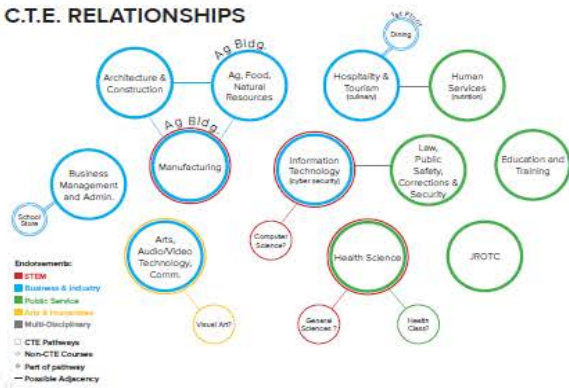


- + Programming Complete
- + Huckabee collaborated with AISD staff members to create the appropriate building program that applies to both Austin & Taylor Elementary



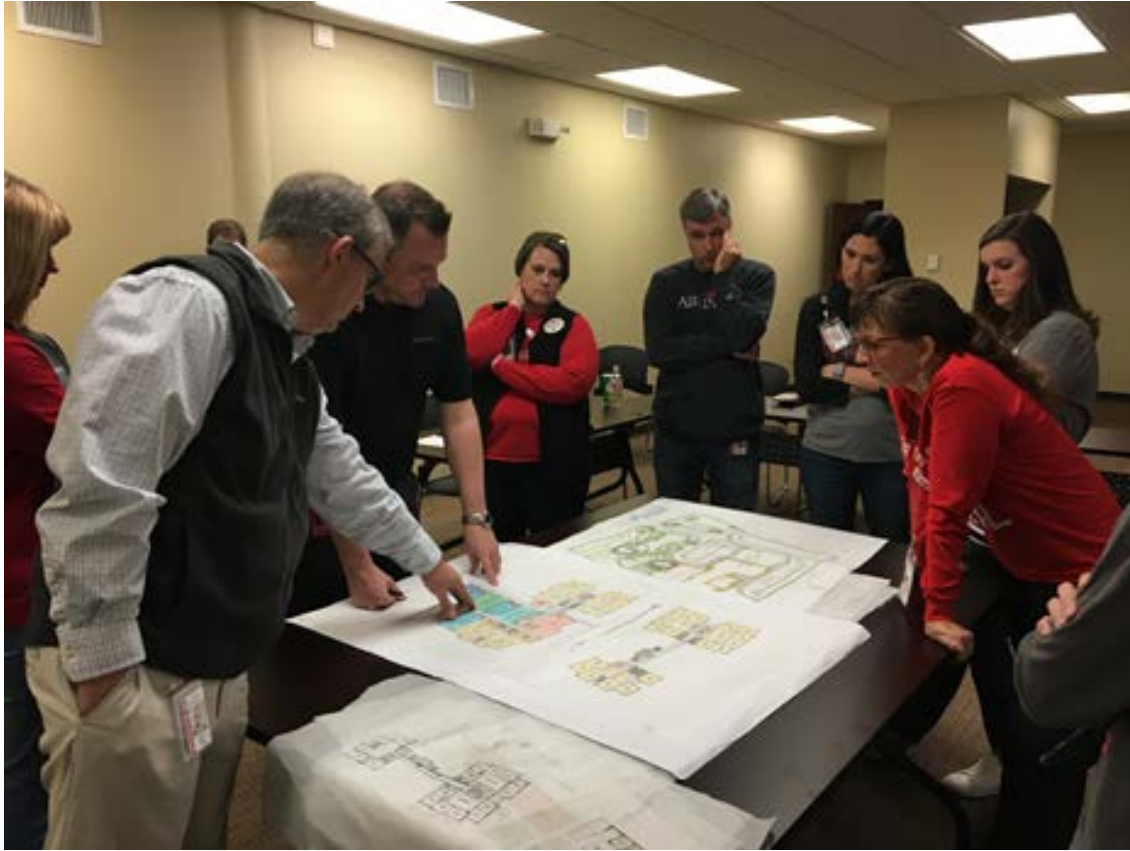
Project Design Process

C.T.E. RELATIONSHIPS



Huckabee

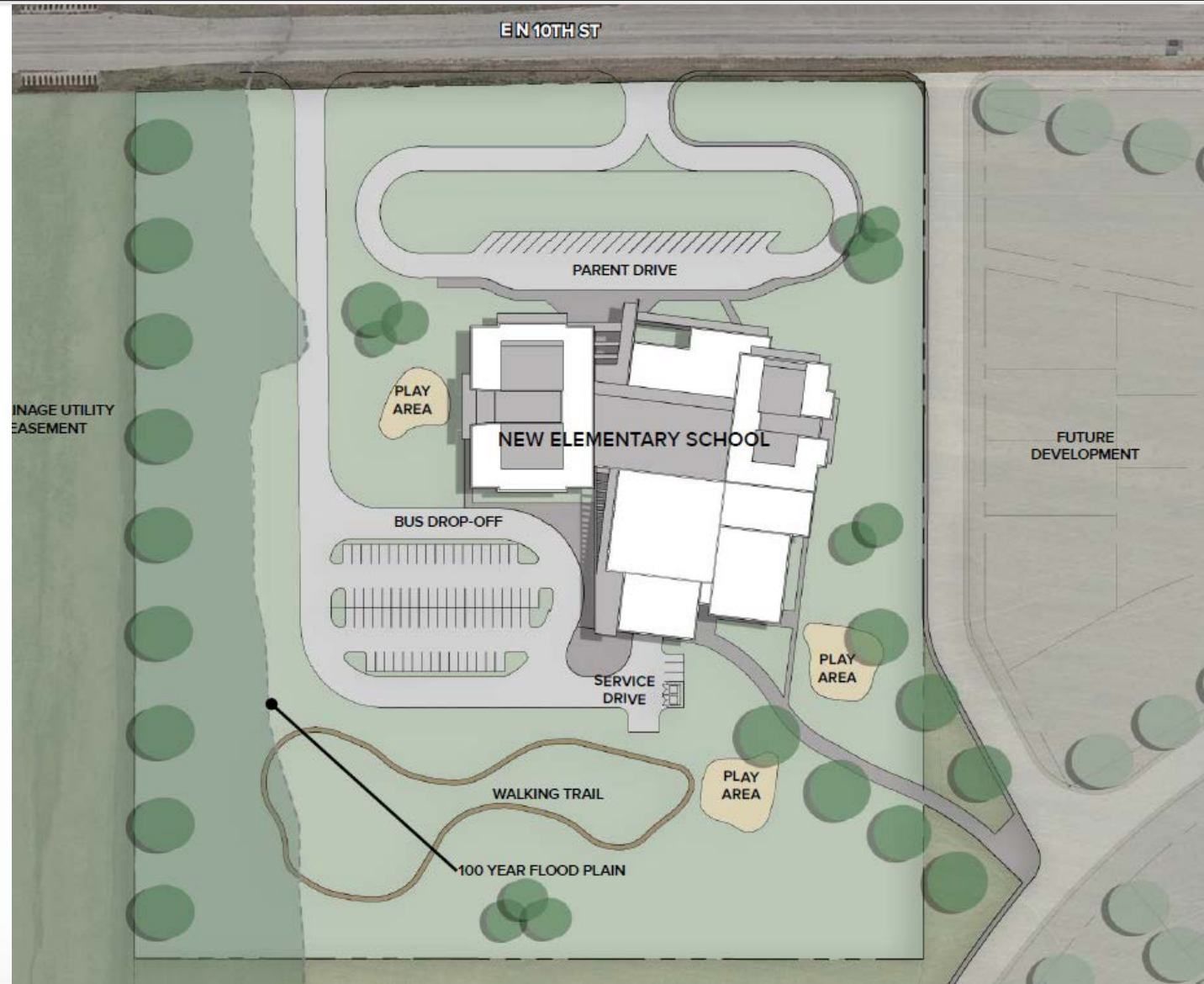
Austin & Taylor Elementary Schools



Austin Elementary School



Taylor Elementary School



Austin & Taylor Elementary Schools



2-story advantages:

- + Reduced impact to site development.
- + Cost savings due to reduced concrete foundations, piers, roof area.
- + Floor Plan efficiency. Students maintain proximity to core areas (cafeteria, stage, library)

Austin & Taylor Elementary Schools Massing



Austin & Taylor Elementary Schools Massing



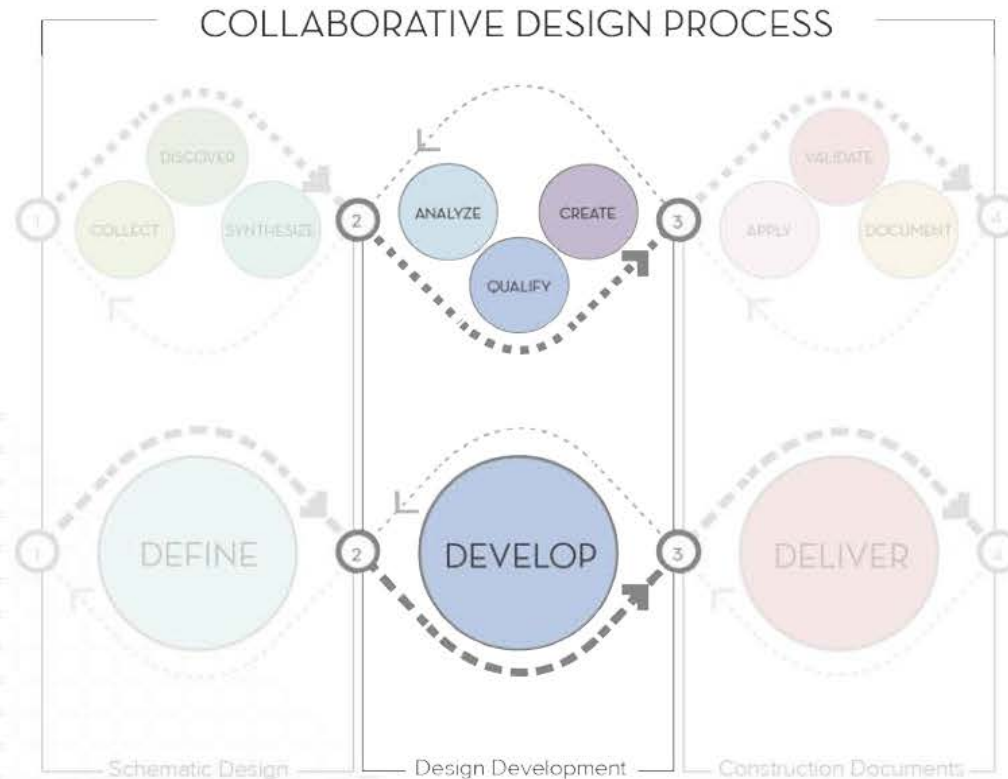
Austin Elementary School Precedent Images



Taylor Elementary School Precedent Images



Project Design Process



DEVELOP

DESIGN DEVELOPMENT

After we synthesize the initial information, we work together to imagine, create, analyze and qualify solutions for you.

We use a range of tools and techniques—from hand drawn design options in real time to virtual reality solutions—to investigate and visualize design solutions.

We make a point to explore all the possibilities and consider all contributions, because this leads us all to the most holistic solution.

Huckabee

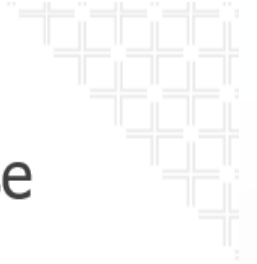
Austin & Taylor Elementary Schools

+ What's happened to date:

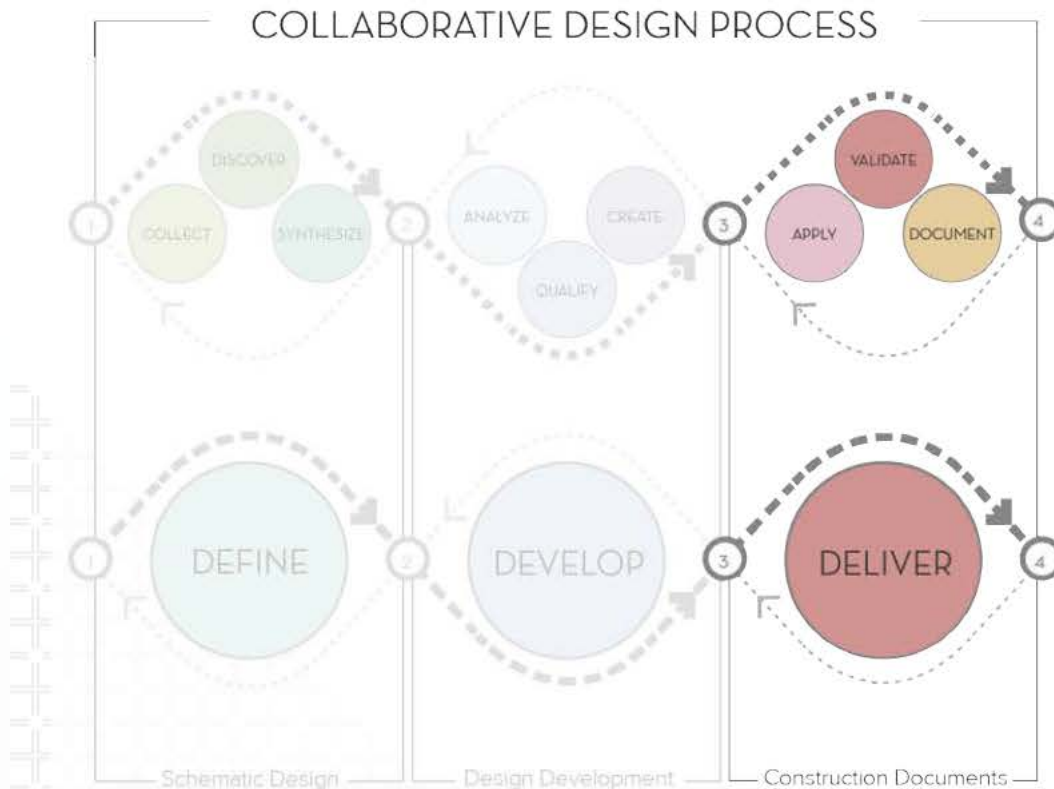
- Visioning Complete
- Programming Complete
- Schematic Design Complete
- Design Development Underway
- Design Development Phase complete 4/12/19
- Construction Document Phase 4/13/19 thru 6/10/19

+ What's happening next:

- Design Development Phase complete 4/12/19
- Construction Document Phase:
 - Austin - 4/13/19 thru 6/10/19
 - Taylor – 4/13/19 thru 6/24/19
- Construction Phase:
 - Austin – 7/22/19 thru 7/22/20
 - Taylor – 8/05/19 thru 8/01/20



Project Design Process



DELIVER

CONSTRUCTION DOCUMENTS

As we move through the process, we iterate and validate the design solutions and make sure design elements continue to align with code requirements, budget, scope and programs as they evolve.

Designs move from idea to actuality, and documentation takes place.

The end result of these processes is more than a building, it's a thoughtful, functional, detailed-orientated solution built on a foundation of more collaboration and purpose.

Huckabee

Athletic Improvements – Abilene High



- + New synthetic turf practice field
- + New practice field grandstand with press box
- + New synthetic turf baseball & softball infields
- + New practice field, baseball, softball & tennis courts lighting

Athletic Improvements – Cooper High School



- + New synthetic turf practice field within existing track
- + New practice field grandstand with press box
- + New synthetic turf baseball & softball infields
- + New practice field, baseball, softball & tennis courts lighting

Athletic Improvements – Shotwell Stadium



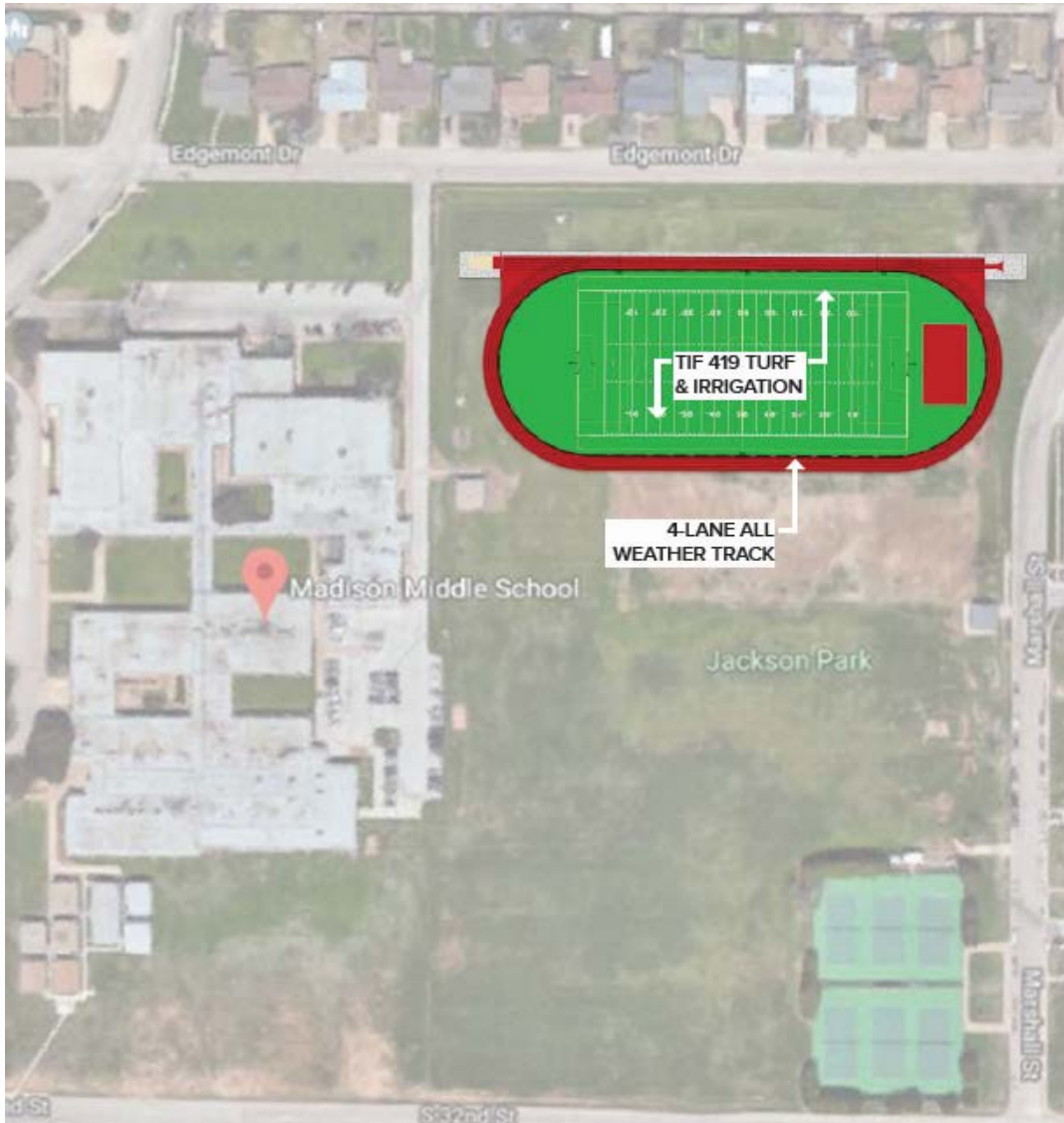
- + New 8 lane track and synthetic infield
- + New grandstand with press box
- + New track and field lighting
- + New discus and shot put area

Athletic Improvements – Clack Middle School



- + New 4 lane track
- + New natural grass infield with irrigation

Athletic Improvements –Madison Middle School



- + New 4 lane track
- + New natural grass infield with irrigation

Athletic Improvements –Mann Middle School



- + New 4 lane track
- + New natural grass infield with irrigation

Athletic Improvements

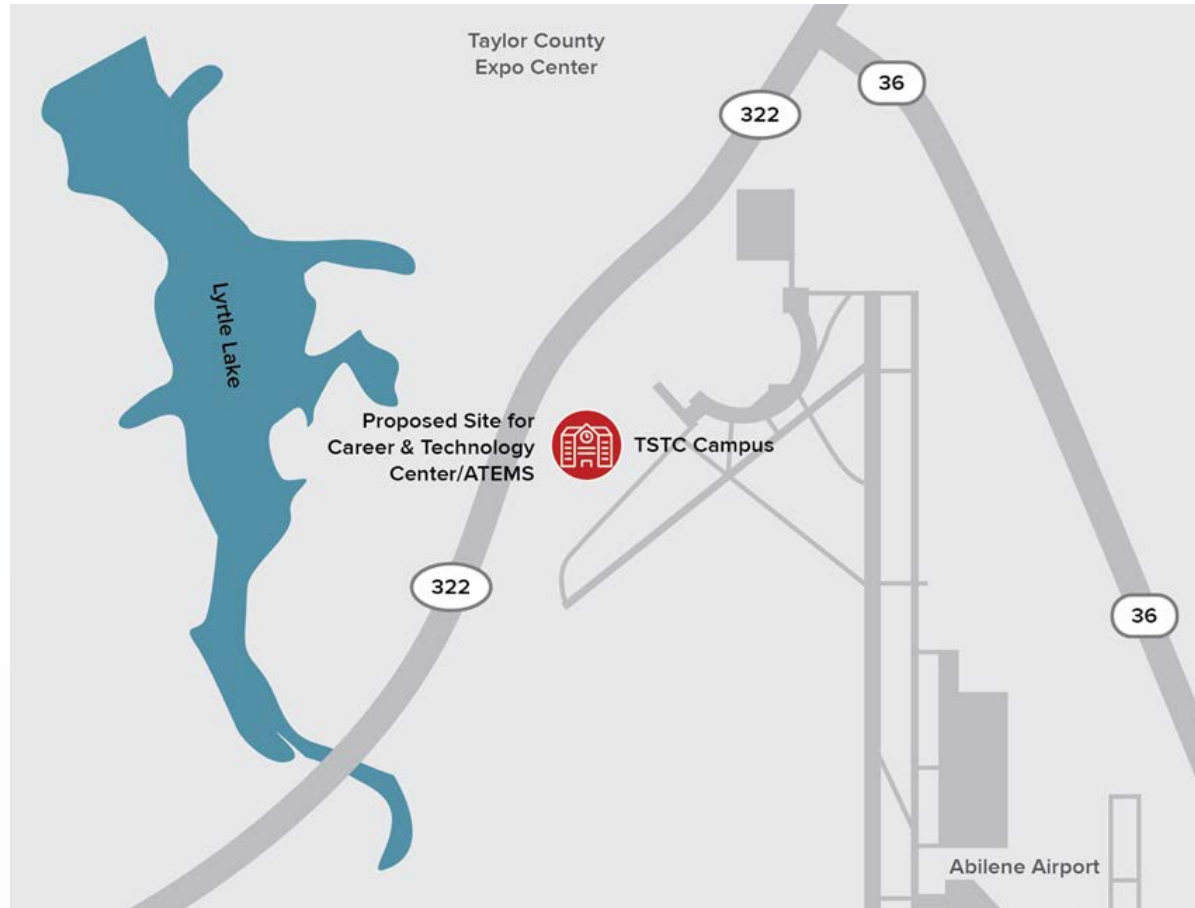
+ What's happened to date:

- Schematic Design Complete
- Design Development Complete
- Construction Documents 95% Complete

+ What's happening next:

- Bidding Period 3/26/19 thru 4/16/19
- Preconstruction Meeting 4/3/19
- Bid Opening 4/16/19
- GC Interviews 4/18/19
- GC recommendation to Board 4/22/19
- Construction Starts 4/29/19

ATEMS/CTE Center



ATEMS/CTE Center

+ What's happened to date:

- Met with Dr. Young and executive staff to discuss project siting and schedule.
- Walked proposed site with TSTC.
- Toured Wichita Falls CTE campus with department staff (group of about 20 teachers)
- Met with department staff to review visioning plan and discuss ATEMS and CTE integration.
- Toured several DFW campuses with department staff, including HEB Buinger CTE Academy, Arlington CTC, and Mansfield Ben Barber Career Tech.
- Followed tours with day long department specific meetings on general program needs and thoughts on spaces.

+ What's happening next:

- Follow up with any additional program meetings or discussions as necessary.
- Provide detailed program to district for final approval.
- Have internal conceptual concepts meeting prior to district schematic charrette.
- Schedule 1-2 day schematic design charrette with district to develop an initial form and massing for the new campus.



Capital Improvements – AHS (Phase 1 & 2)



- + Engineer – Bradshaw & Associates
 - Bids Received - March 25 & 26
 - Board Consideration – April 8
 - Construction Duration – TBD
 - Addresses Existing HVAC Limitations

New Dyess Elementary

REPLACEMENT SCHOOL

- Modern Safety & Security Features Now Standard in Schools
- Instructional Spaces Designed for Today's Learners
- Collaboration & Flex Spaces
- Modern Playground Structures & Surfaces
- Current Technology Infrastructure & Equipment
- Energy Efficient Features
- Same Site as Current School

CURRENT FACILITY



Exterior Access Points



Undersized & Inadequate Space



Exterior Access to Classrooms



Narrow Hallways Restrict Flow

- Opened 1957
- Open Campus
 - Does Not Meet Today's Safety & Security Standards
 - Exterior Access to Classrooms
- Inadequate Core Spaces
 - Restricted Flow in Hallways

+ Architect – PSC

- Kick Off Meeting March 28
- Survey
- Schedule – TBD
- Open 2021

High School/Middle School Fine Arts

High Schools:

Fine Arts

- Renovate CTE spaces into new band hall and practice room
- Renovate/upgrade choir hall
- Upgrade stage rigging, controls, sound and lighting

Middle Schools:

Fine Arts

- Build a new band hall and renovate existing band hall for orchestra
- Renovate existing choir room with enhanced acoustics
- Renovate existing art lab and provide new furniture

Middle School Athletics



Weight Room

40' x 70' pre-engineered building for weight room, workout area, and storage

HIGH SCHOOL/MIDDLE SCHOOL FINE ARTS ADDITIONS, RENOVATIONS/IMPROVEMENTS & ATHLETIC ADDITIONS

ARCHITECT – JACOB MARTIN

KICK OFF MEETING – APRIL 2

SCHEDULE - TBD



Questions?