



Master Facility Planning Committee
Meeting 3: Thursday, April 26, 2018
Mann Middle School

Agenda

- Welcome
- Meeting 2 Recap
- Departmental Presentations
 - Curriculum & Instruction
 - Career & Technology Education
 - Technology
 - Fine Arts
 - Athletics
- Facility Assessment Overview
- Demographic Projections
- Grade Alignment Discussion
- Closing

Meeting 2 Recap

State of the District:

- 17,000 students and 2,500 employees
- 22 campuses
- All received state's highest academic ranking in 2017 with 54 Distinction Designations
- More than 70% Economically Disadvantaged
- Important for students to be engaged in extracurriculars: 60% of students participate in athletics, 80% participate in at least one fine arts class

Meeting 2 Recap

Strategic Plan:

- Strategic Plan: Belief Statements, Priorities, Mission & Vision, “What this means...”
 - MISSION: AISD engages and empowers each student to be contributing, responsible citizens who reach their full potential through relevant, innovative and rigorous learning experiences
 - VISION: Inspired, skilled, engaged and empowered students make a difference in the world
- Was developed in partnership with community members and students
- Should serve as guiding document for Committee

Meeting 2 Recap

AISD Financial Overview:

- Three primary sources: Federal, State, Local
- Annual budget of approximately \$152M
- Local Tax Effort – Two Tax Rates:
 - Maintenance & Operations – daily expenses (i.e. salaries, utilities, supplies)
 - Interest & Sinking – “big ticket” capital items (i.e. new building construction, renovations, technology, etc.); cannot be used for M&O items like teacher salaries
- AISD’s current tax rate at \$1.20; M&O has remained at \$1.04; I&S was raised after 2013 bond program and has started to decrease
- AISD’s tax rate is lower than Wichita Falls ISD, Lubbock ISD, Weatherford ISD, Keller ISD, Aledo ISD



Departmental Presentations: **Curriculum & Instruction**

Abigayle Barton, Ed.D.
Associate Superintendent for
Curriculum and Instruction

Who We Are

- Current Enrollment: 16,650
- Certified Staff: approximately 2,500
- Prekindergarten – Grade 12
- Planetarium
- 1 Early Childhood Center
- 14 Elementary Campuses
- 4 Middle School Campuses
- 2 Traditional High School Campuses
- 1 Magnet High School (ATEMS)
- Woodson Center for Excellence (Alternative Campus)
- Jefferson Center (DAEP)

Who We Are

- Met Standard District-wide (all 22 campuses)
- 54 Distinction Designations for Academic Achievement
- 51 Pre-AP and AP courses offered
- 300+ students enrolled in dual credit courses
- 6 college/university partnerships

Facility/Equipment Comparison

Traditional Classroom:

- Desks/Tables and Chairs
- Promethean Board
- Teacher Desk and Chair
- Teacher Computer
- White Board

Recent Trend:

- Requests for flexible seating through AEF innovative teaching grants

Facilities/Equipment Overview

Recent Trend:

Traditional Classroom:





Questions?



Departmental
Presentations:

**Career &
Technology
Education**

Ryder Appleton,
Director of CTE

Who We Are – Abilene ISD CTE

- How many students participate in programs?
3985 (2847 high school, 1138 eighth graders)
- What grade levels?
8-12
- 15 of 16 Career Cluster Endorsements offered under House Bill 5

Who We Are – Abilene ISD CTE

- Approximately 60 dedicated CTE staff members and teachers
- 15 of 16 Career Cluster Endorsements offered
- The Mission of the Career and Technical Education Program in the Abilene Independent School District is to prepare students for post-secondary education and/or the workforce and to assume productive roles in the family and the community.

Who We Are – Abilene ISD CTE

- Recent awards
 - Advanced to state in multiple Career Tech Student Organizations (CTSO's) including:
 - Texas Public Service Organization (TPSA)
 - State champion (Cell extraction), other state qualifying teams
 - Health (HOSA)
 - 6th place Medical Math and multiple other state qualifiers such as CPR / First Aid, Certified Medical Assistant and National Service Project (raised \$900)
 - Texas Association of Future Educators (TAFE)
 - 1st Place Children's Literature (scholarship), Blue Ribbons in other events and *TWO national qualifying teams in Impromptu Lesson Planning and Impromptu Speaking*
 - Technology Student Association
 - 8th place robotics (first time participated in event)

Who We Are – Abilene ISD CTE

- Recent awards
 - Advanced to state in multiple Career Tech Student Organizations (CTSO's) including:

Skills USA

- 2nd place Manufacturing (scholarship), multiple other state qualifiers in Cosmetology, Electrical Trades, Computer Science (52 students)

FFA

- Cotton team, Livestock exhibition, Leadership and Career Development

Family, Career & Community Leaders of America (FCCLA)

- Gold and silver medals, many top 5 in events such as FCCLA Creed Mission and Student Body Spotlight on Projects

Facility Needs & Improvements

Are facilities aging?

Yes

Are facilities too small for student population?

Yes

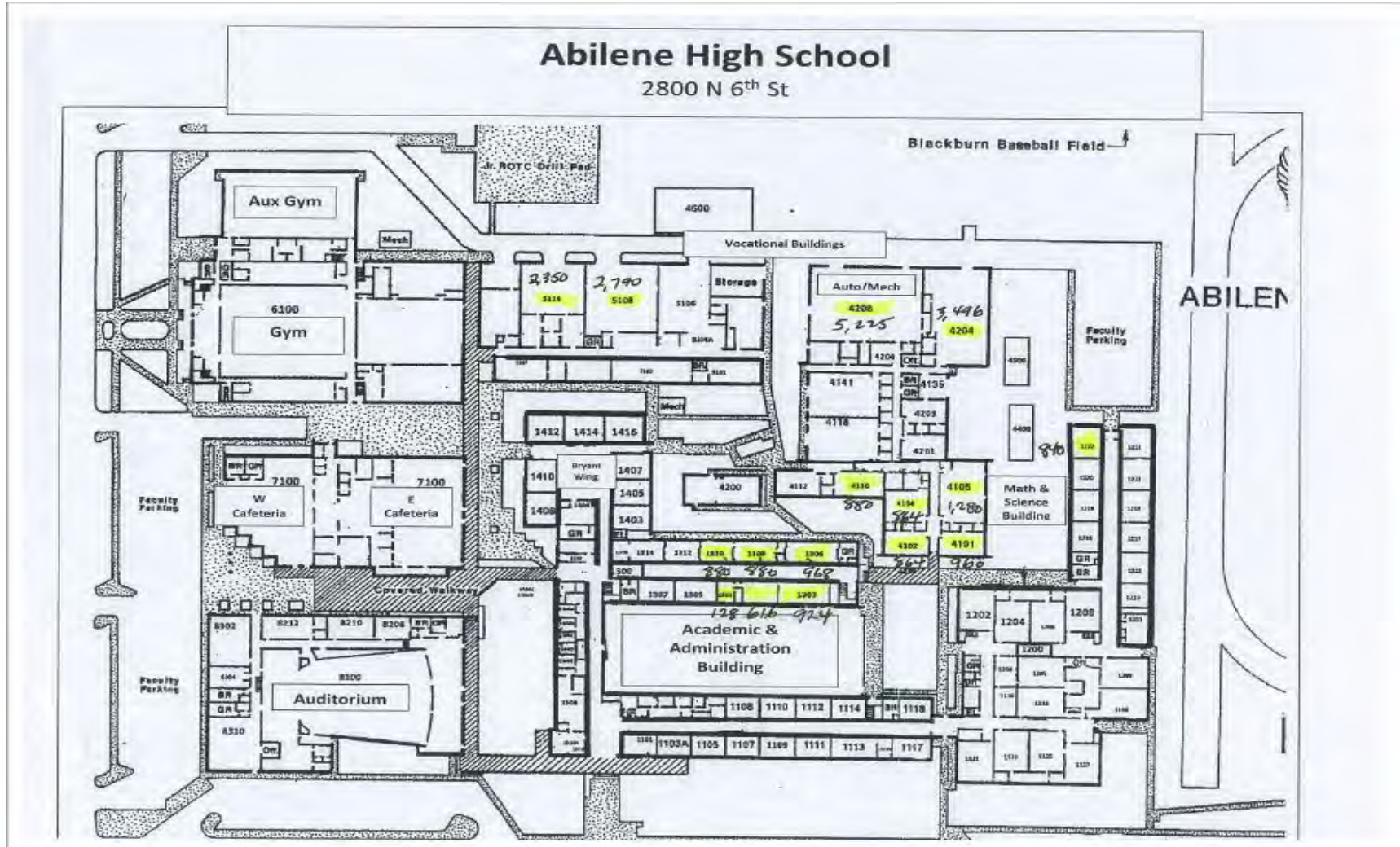
Are facilities missing?

Some programs are only offered at one high school. This requires students to travel to receive instruction, PBL and certification opportunities.

Are facilities equitable?

Yes and no, based on program availability at each campus as well as square footage.

Abilene High School CTE space



Abilene High School CTE space

Classroom 5114 = 2,350 sqft

Classroom 5108 = 2,790 sqft

Auto/Mech 4208 = 5225 sqft

Classroom 4104 = 864 sqft

Classroom 4102 = 864 sqft

Classroom 4105 = 1,280 sqft

Classroom 4101 = 960 sqft

Classroom 4110 = 880 sqft

Classroom 4204 = 3,496 sqft

Classroom 1310 = 880 sqft

Classroom 1308 = 880 sqft

Classroom 1301 = 128 sqft

Classroom 1303 = 924 sqft

Dining room by 1303 = 616 sqft

Classroom 1306 = 968 sqft

Classroom 1322 = 840 sqft

TOTAL SQFT = 23,945

Cooper High School CTE space

Serving lab 511 = 832 sqft

Cooking lab 513 = 1,068 sqft

Sewing lab 516 = 1,200 sqft

Baking lab 514 = 740 sqft

Welding Shop V23 = 3,130 sqft

Classroom V19 = 1,584 sqft

Classroom V17 864 sqft

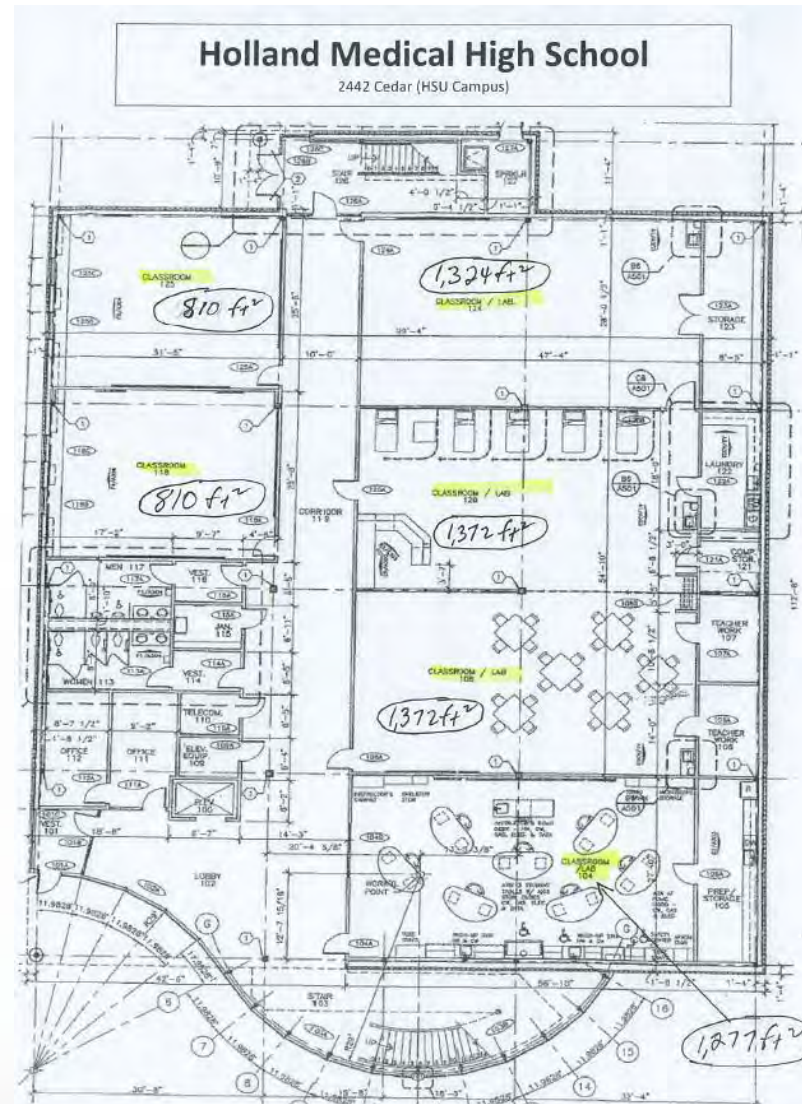
Classroom V15 = 1,232 sqft

Classroom V13 = 896 sqft

Classroom V14 960 sqft

TOTAL SQFT = 12,506

Holland High School CTE space



Holland High School CTE space

Classroom Lab 104 = 1,277 sqft

Classroom Lab 108 = 1,372 sqft

Classroom Lab 120 = 1,372 sqft

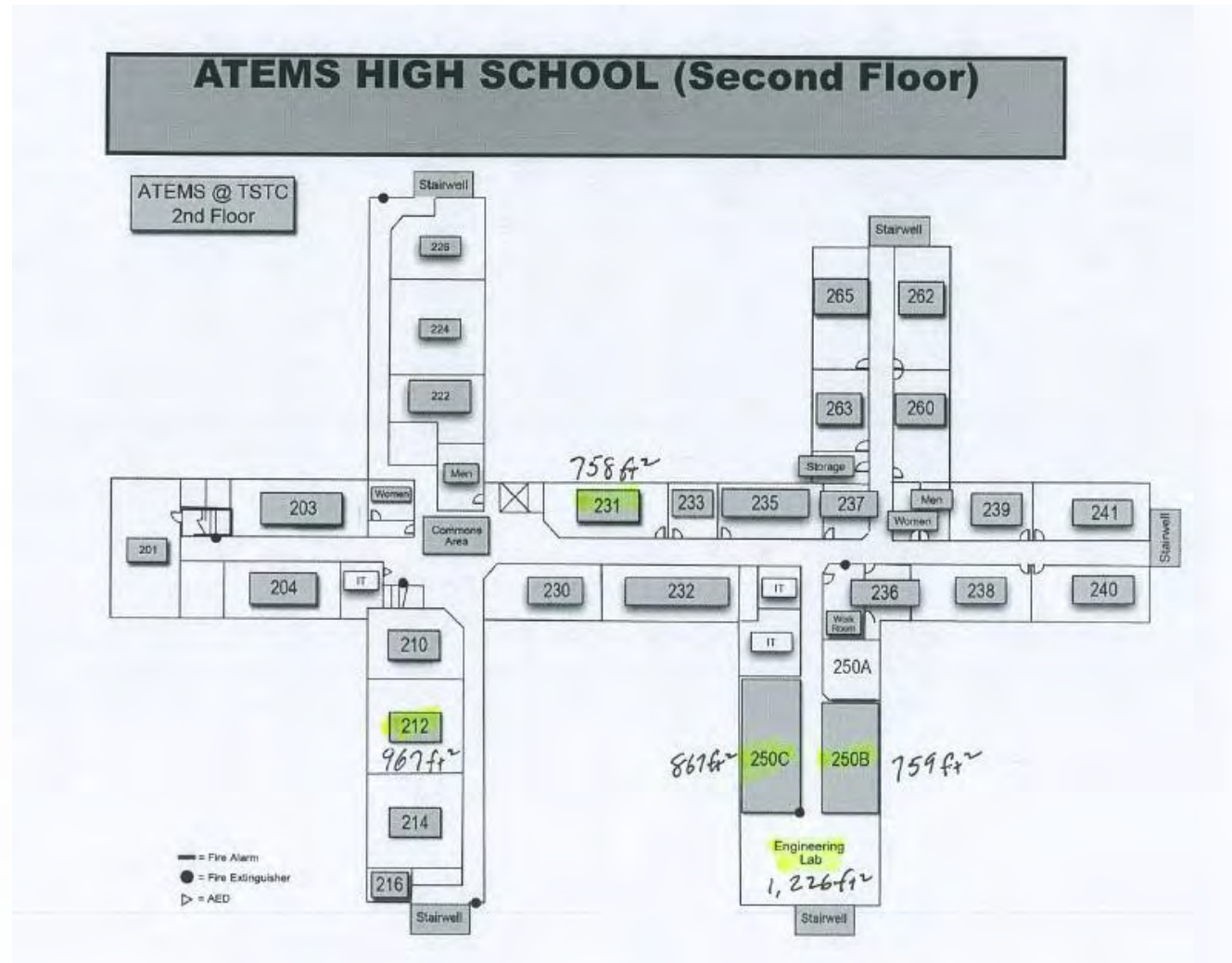
Classroom Lab 124 = 1,324 sqft

Classroom 118 = 810 sqft

Classroom 125 = 810 sqft

TOTAL SQFT = 8,965

ATEMS High School CTE space



ATEMS High School CTE space

Classroom 212 = 967 sqft

Classroom 231 = 758 sqft

Classroom 250C = 867 sqft

Classroom 250B = 759 sqft

Engineering lab = 1,226 sqft

TOTAL SQTF = 4,577

Total AISD CTE space all facilities

AHS – 23,945

CHS – 12,506

Holland – 8,965

ATEMS – 4,577

TOTAL = 49,993 SQFT

Abilene ISD CTE Facilities Comparisons



Construction Trades

AHS



CHS



Culinary Arts

AHS



CHS



Computer Maintenance & Networking

AHS



CHS



Criminal Justice

AHS



CHS



Ag Science Shops

AHS



CHS



Ag Science Classrooms

AHS



CHS



Cooper High School

Manufacturing Shop with Embedded Classroom



Cooper High School

Business Classroom And Computer Lab



Lubbock ISD Manufacturing Shop



Lubbock ISD Culinary Arts



Midland ISD CTE comparisons

How many square feet of CTE space do you have district wide and at how many campuses?

Square feet is unknown due to being included in the high school campuses as a whole. 3 campuses - Midland High, LEE High (both traditional HS) and Coleman HS (alternative HS)

What year was your oldest and newest CTE facility built?

Oldest would be at Midland High built back in 1949 and newest which is over 50 yrs old - 1961 is LEE HS. The CTE depts at each are antiquated. In our dual credit areas, they attend newer facilities on the college campuses.

Which endorsement/cluster has the highest enrollment?

Health Science - Public Service

Do you have future plans for facility upgrades or expansions?

Yes, in the middle of a facility study now for the entire district due to age of campuses and population growth.

If you have a stand-alone CTE high school is it commuter or do students enroll and stay there, participating solely in CTSO's offered there?

No stand-alone CTE high school at this time. We do have dual credit programs where students leave their home campus and travel to a Midland College facility for a 2 hr. block class.

Ector County (Odessa) CTE comparisons

How many square feet of CTE space do you have district wide and at how many campuses?

I do not know the square footage but we have CTE pretty spread out around the district. We have one or two CTE courses at all six middle schools, a great deal of CTE at the two 6A high schools (Odessa High and Permian High), a CTE Early College High School located at Odessa College, a few CTE courses at our traditional early college high school located at the Univ of TX Permian Basin, we have a technical center called Frost Tech that holds all of our more industrialized courses such as Welding and Auto Tech, and we have another quasi-tech center that is a shared facility at the New Tech Odessa campus, CTE Ag programs at our Ag Farm, and we have CTE dual credit programs located at Odessa College and some dual credit located at the high schools and tech centers as well.

What year was your oldest and newest CTE facility built?

A/G Farm Buildings	1990	21,735
Frost Tech. Center	1998 (purchased)	30,842
NTO/Tech. Center (shared facility)	1996	146,893

Which endorsement/cluster has the highest enrollment?

Business is our largest pathway, with Health Science coming in second, and Welding coming in third (very close to Auto Tech)

Do you have future plans for facility upgrades or expansions?

That is my hope. Our facilities are not large enough for our enrollment and certainly won't be large enough for the anticipated growth in our district/town as per recent information shared by demographers. It is very concerning. There are currently some upgrades occurring at the Ag Farm which has become quite dilapidated, but is such an awesome facility for our students. It would be wonderful to have a new tech center that would accommodate current course requests and the anticipated growth, and also so that CTE would be in one location rather than spread out across the district.

If you have a stand-alone CTE high school is it commuter or do students enroll and stay there, participating solely in CTSO's offered there?

Our CTE tech centers are not the students' home campus. Their home campus is either Odessa High, Permian High, or New Tech Odessa and they bus over for the CTE electives. We have had a CTE high school that was the students' home campus in previous years but the enrollment was low. In this district, it is clear that students do not want to have to choose between going to school with their peers and enrolling in CTE. What works for us (as we've seen a 93% increase in enrollment in six years), is that students will bus to a CTE course, as long as they don't have to choose between CTE and the kids they've gone to school with for years.

Lubbock ISD CTE comparisons

How many square feet of CTE space do you have district wide and at how many campuses?

I don't have the square footage but we have CTE at all of our CTE campuses-CHS, MHS, EHS, LHS and Talkington. We also have a large Advanced Technology Center that houses our Trade and Industry programs as well as RST, Graphic Design, Floral, and Culinary, AV Production, Architecture and Engineering Design.

What year was your oldest and newest CTE facility built?

The newest would be the ATC and it was done 20 years ago. We have been remodeling and adding programs over the last two years

Which endorsement/cluster has the highest enrollment?

Overall probably FCS. We offer several classes as well as Culinary at all campuses

Do you have future plans for facility upgrades or expansions?

Doing it now

If you have a stand-alone CTE high school is it commuter or do students enroll and stay there, participating solely in CTSO's offered there?

All students commute to the ATC. Must attend 2 periods. Most of the classes are double blocked. We provide transportation from each high school.



Questions?



Departmental Presentations: **Technology**

Cary Owens,
Chief Technology Officer

Who We Are

Technology Areas

- Services

Servers, software, applications, Internet, content filters, phones/SIP trunks, wireless, email, document storage, backups, data and software integration with district programs, computer images and updates, Staff/Substitutes/Temporary employee ID (6 employees – Technology Center located on N. 6th Street across from AHS)

- PEIMS

State required data submissions, implementation and support of the Student Information System-TEAMS, report writing and student data integration with textbooks and district programs (4 employees – One AISD Center basement)

- Libraries

- 11 district librarians (1 early childhood, 3 elementary, 4 middle school, 2 high school, 1 ATEMS/Woodson/Jefferson/Holland and is the district cataloguer)
- 14 elementary library associates, 5 library aides

- Support

Setup-install/support/repair district desktops, laptops, iPads, Chromebooks, projectors, Promethean boards; network cabling and support of campus networks, safety and security cameras and card readers; inventory (16 employees – Alta Vista's cafeteria/gym/hall, and a portable at Alta Vista on South 11th St.)

Department Goal/Mission: Abilene ISD Technology provides an excellent, barrier free educational environment to every end user through service, support, infrastructure, data reporting, and knowledge sharing with resources.

Technology Services Facility

Technology Center



2905 N. 6th St. (across from AHS)



Network Operations Center (NOC)

Technology Services Facility (continued)

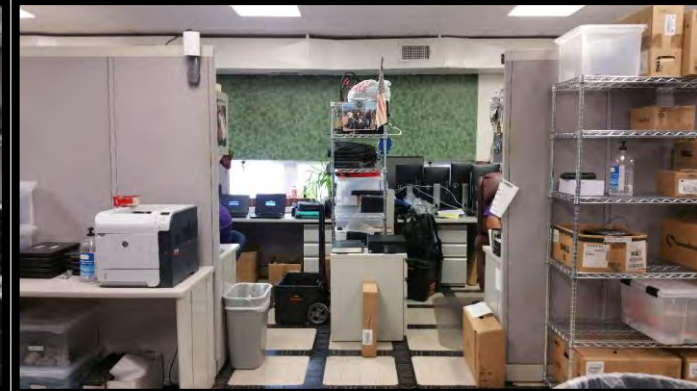


Technology Support Facility

Technology Support

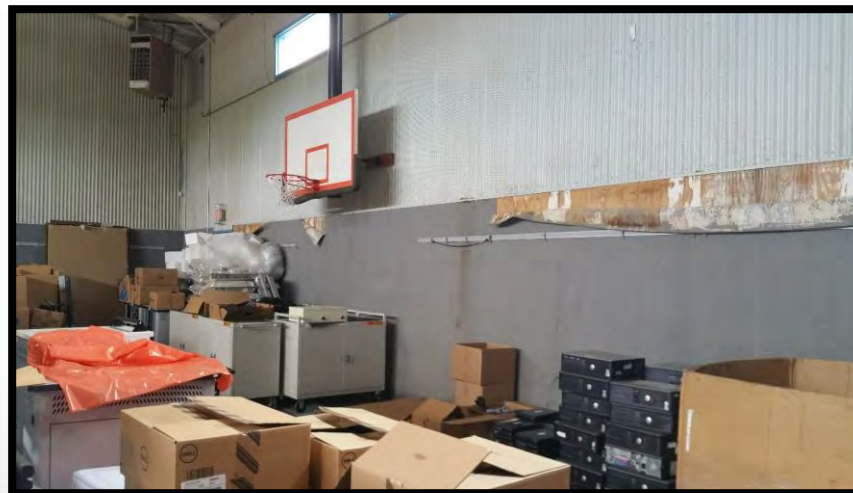
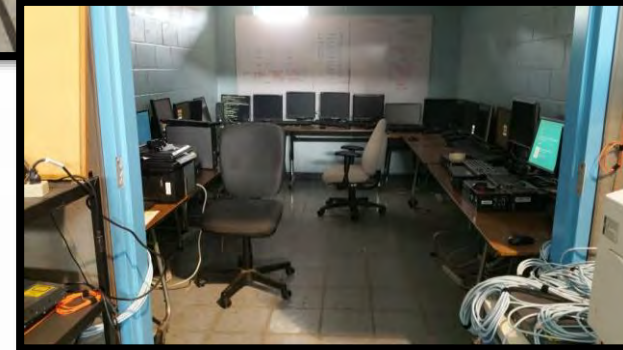
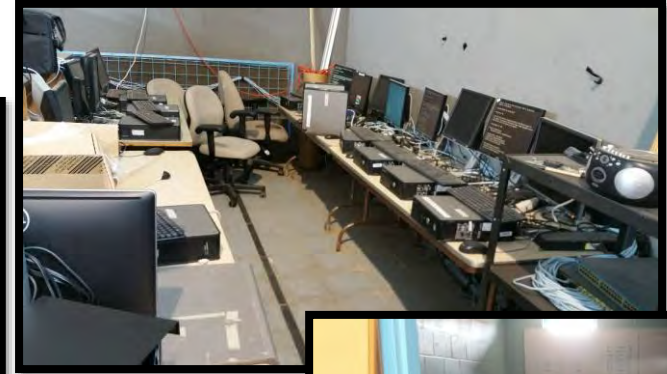


1929 S. 11th St.
(Next to Alta Vista - Adult Learning)



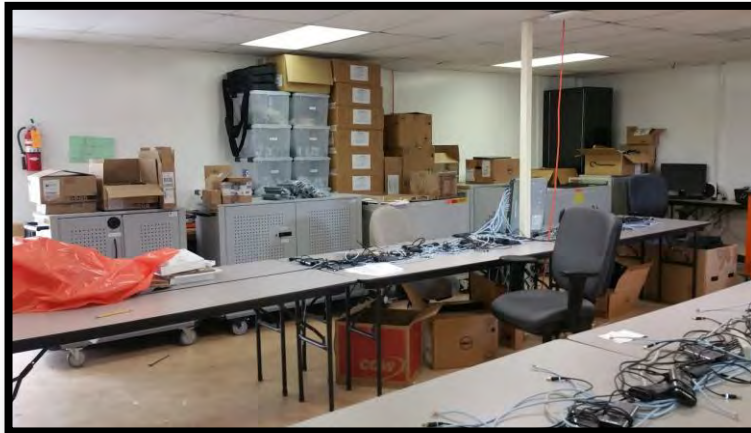
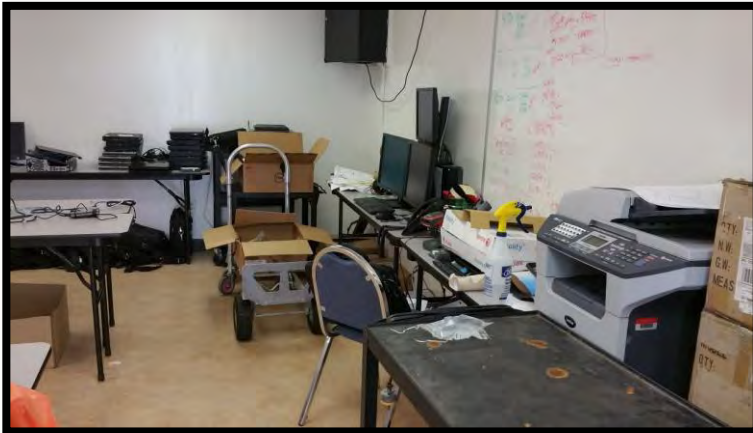
Technology Support Facility (continued)

Technology Support (outback – old Alta Vista gym)



Technology Support Facility (continued)

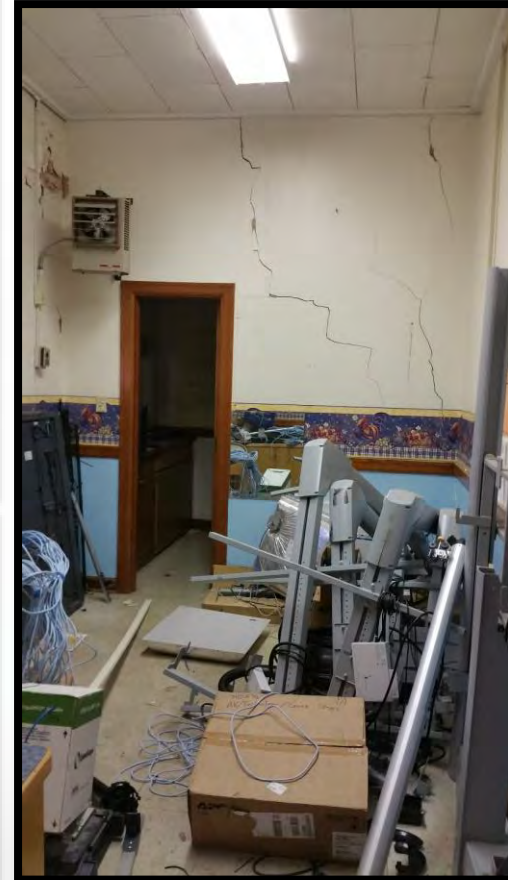
Technology Support (outback – Portable behind old Alta Vista gym)



Parking lot across the street on S. 11th

Technology Support Facility (continued)

Technology Support (outback – old Alta Vista hall)



Technology District Library Facility

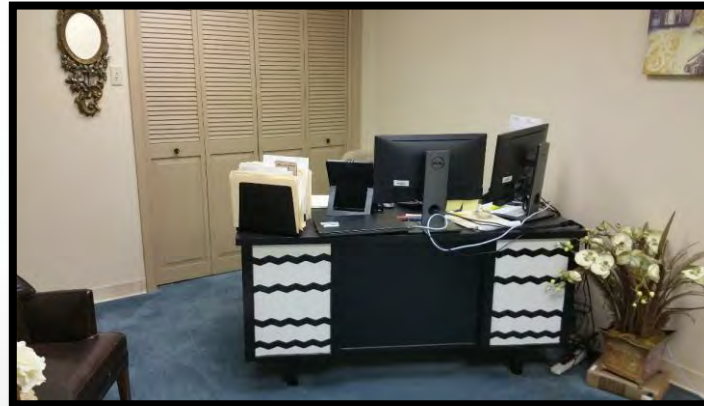
Technology Librarians are housed on campuses

Class sets, class set manager and district cataloguer/lead secondary librarian are housed in One AISD Center East basement.



Technology PEIMS Facility

One AISD Center West basement.



Facility Needs & Improvements

- District location for a small secondary backup data center with adequate power, air conditioning, and security.
- Technology Support facilities at Alta Vista are aging, lacks air conditioning in the gym, and facilities are too small to support the district's growing technology needs.
 - Need an adequate receiving dock, secured parking, receiving/storage space for computer equipment, printers, wiring/network equipment and supplies, storage for green tag equipment, work space for processing/imaging/repair of equipment
- Location for PEIMS department to have collaborative office space environment and training facilities.



Questions?



Departmental Presentations: **Fine Arts**

Jay Lester,
Executive Director of
Fine Arts

Abilene ISD Fine Arts Department

Comprised of Music, Art, Theatre, Dance, & Speech/Debate

- How many students participate in programs? 13,099 out of 16,609 (79% enrolled)
 - Elementary Music (grades K-5) on 14 campuses – 7,184
 - Elementary Art (grades K-5) on 13 campuses – 6,774
 - Band (grades 6-12) on 6 campuses - 1,247
 - Jazz Band (grades 9-12) on 2 campuses – 49
 - Steel Drum Band (grades 9-12) on 1 campus - 14
 - Band/Color Guard (grades 9-12) on 2 campuses - 35
 - Choir (grades 6-12) on 6 campuses - 1,095
 - Show Choir (grades 10-12) on 2 campuses - 26
 - AP Music Theory (grades 10-12) on 2 campuses - 15
 - Orchestra (grades 6-12) on 6 campuses – 735
 - Revolution Strings (grades 9-12) on 2 campuses - 22
 - Art (grades 7-12) on 8 campuses – 1,750
 - Theater (grades 6-12) on 6 campuses - 815
 - Dance/Drill Team (grades 9-12) on 2 campuses - 50
 - Hand bell Choir (grades 6-12) on 3 campuses - 34
 - Speech/Debate Team (grades 9-12) on 2 campuses - 27

Abilene ISD Fine Arts Department

- 2017-18 Awards and Distinctions
 - Best Community for Music Education by NAMM Foundation
 - 3 TMEA All-State Musicians
 - 631 UIL Region Solo & Ensemble Gold Medals
 - 174 UIL Solo & Ensemble students qualified for State Contest in May
 - 197 All-Region Musicians
 - 853 pieces of art displayed at the Grace Youth Art Month
 - 93 pieces of art in the Young Masters Juried AP Art Show
 - Cooper HS UIL One Act Play advanced to Bi-District
 - 26 UIL Sweepstakes awards at music ensemble contests
 - 1 Fine Arts teacher named as campus Teacher of the Year
 - Wendy Weeks, AHS Choir - ACU Morlan Award for Outstanding Education Alumnus
 - Brady Sloane, Madison Art - McMurry Outstanding Fine Arts Alumnus

Fine Arts Department

17 activities/distinct courses of study

Elementary Music	Elementary Art
Choir	Campus Shows
UIL Music Memory	UIL Art
Grade-level Programs	Grace Art Show
Cajunfest	One AISD Art Show
City Sidewalks	Grace Museum Field Trip
Abilene Philharmonic Field Trip	Young Audiences Performances
Nutcracker Field Trip	
Young Audiences Performances	
Children's Performing Arts Series	
Nursing Home/Hospital Performances	

Fine Arts Department - Activities

Middle School	Middle School	Middle School	Middle School	Middle School
Art	Band	Orchestra	Choir	Theater
Campus Shows	All City Band	All Region Orchestra	All Region Choir	Campus productions
UIL Art	Solo/Ensemble Contest	Solo/Ensemble Contest	Solo/Ensemble Contest	UIL speaking events
Grace Art Show	UIL Concert/ Sightreading	UIL Concert/ Sightreading	UIL Concert/ Sightreading	
One AISD Art Show	Concerts	Concerts	Concerts	
Pre-AP Art Show	High School Football Game	String Fever Concert	Amahl & the Night Visitors/ACU Opera	

Fine Arts Department - Activities

High School Handbells	High School Band	High School Orchestra	High School Choir
Local Performances	All Region Band	All Region Orchestra	All Region Choir
City Sidewalks	Solo/Ensemble Contest	Solo/Ensemble Contest	Solo/Ensemble Contest
Concerts	UIL Concert/Sightreading	UIL Concert/Sightreading	UIL Concert/Sightreading
Conventions	Concerts	Concerts	Concerts
Resource Roundup	All Area/State Band	String Fever Concert	Show Choir
	Parades	Revolution Strings	Local Events
	Jazz Band	Conventions	Conventions
	Steel Drum Band		
	Drum line		
	Color Guard		

Fine Arts Department - Activities

High School Theater	High School Speech/Debate	High School Dance/Drill Team	High School Art/Photography
Campus productions	Texas Forensic Association	Football/Basketball/ Pep Rallies	Campus Shows
Musicals	UIL Speech Tournaments	Parades	Young Masters Art Show
UIL One Act Play	Natl. Assoc. of Speech & Debate	Competitions	Grace Art Show
Conventions	Host Local Tournament	Spring Dance Show	One AISD Art Show
Performances at Middle Schools			West Texas Fair Competition
			Scholastic Competition
			VASE Competition

Mission

The mission of the Abilene ISD fine arts department is to provide support to campus fine arts teachers while encouraging them to create an inspiring delivery of the subject matter defined by the

Texas Essential Knowledge and Skills

to all students in their classrooms.

Areas of Focus

- Participation numbers – recruitment and retention
- Private Music Lesson Instructor Program – 46 teachers for band, choir, & orchestra
- UIL results – standards based evaluation
- Other organization competition results – TMEA, VASE, TFA, NSDA, DSM
- Hiring a knowledgeable staff– 81 Fine Arts Teachers of which 28% possess a post-graduate degree
- Retention of staff – we average a turnover rate of 5-9% annually (resignation or retirement)
- Provide relevant professional development opportunities for teachers that directly impacts student learning
- Improvement/Replacement of an aging inventory – repair and/or replace
- Focus on improving facilities – constant improvement with the space we're given
- Providing unique and memorable learning & performance experiences
 - Field Trips – Nutcracker, Abilene Philharmonic, Amahl, Theatrical Performances
 - Guest artists/clinicians – music, theater, art
 - State and National Conference presence – TASSP, Texas ASCD, TMEA, Thespians, ASTA, TCDA, TODA
 - Community Partnerships – The Grace Museum, Young Audiences, Abilene Philharmonic, Children's Performing Arts Series, University Partnerships
 - Community Events – City Sidewalks, Cajunfest, Kiwanis Pancake, Resource Roundup, Parades

Band Halls — built for 110 band students and 35 string students

Abilene High School — 1955
44' x 53' = 2,332 sq. ft.

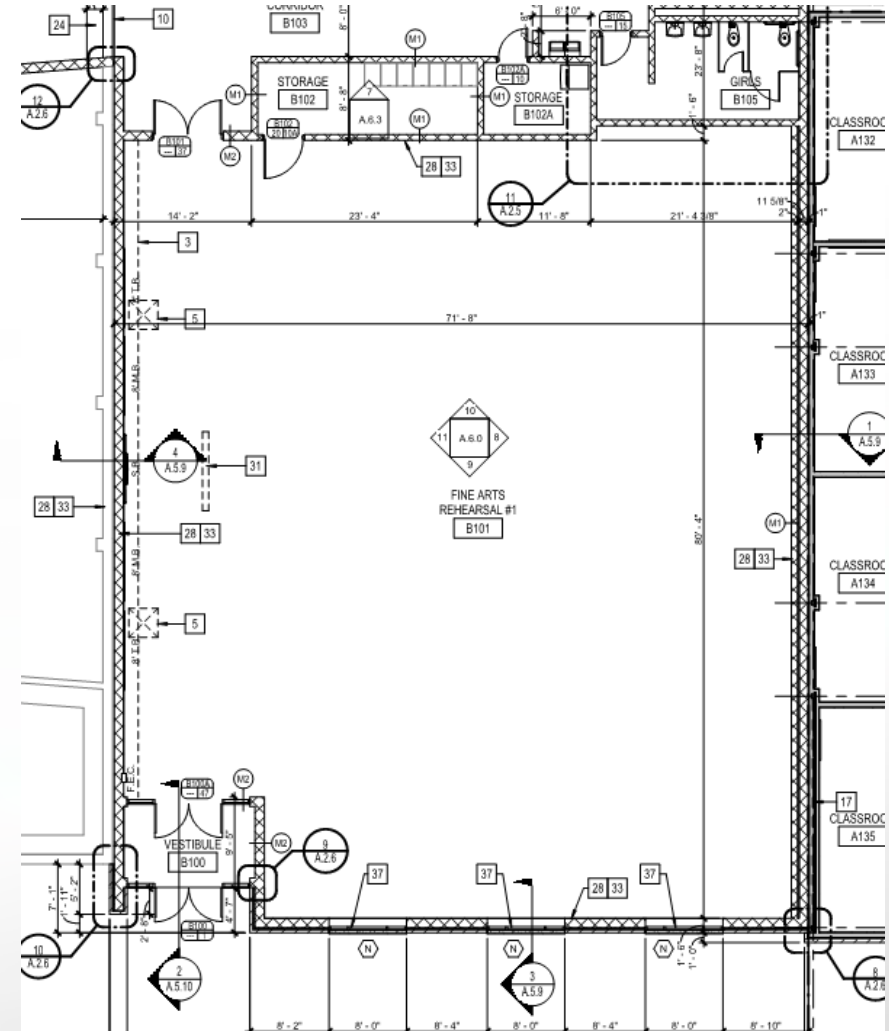


Cooper High School — 1960
51' x 53' = 2,703 sq. ft.



Band Hall – Odessa HS

Original campus built in 1949. Second band hall constructed in 1992. Third and current facility opened in 2016. Main rehearsal space is 71' x 87' = 6,177 sq. ft. (more than twice as much space as either of our band halls).



Main Differences in Modern Music Facilities

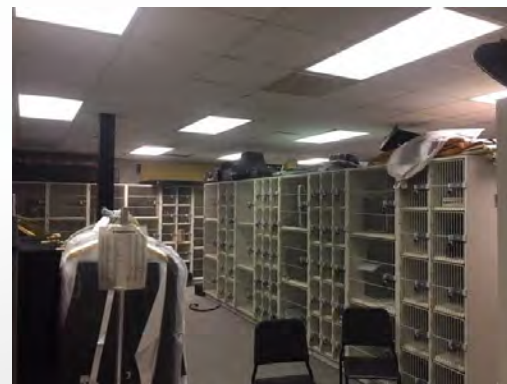
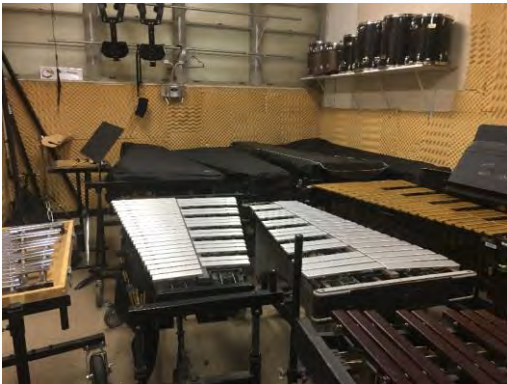
Uniform Storage – we keep them on site

Marching Band – more props, color guard, percussion, etc.

Concert Uniforms – need for storage in off-season

Size of Programs – twice the number for the intended use of the space

Instrument Storage – we utilize lockers over shelving at high schools to secure our investment



Orchestra Hall

Cooper HS – built 1984 for 35 students. 40' x 36' = 1,440 sq. ft. (Note that there are two levels for the ceiling.)



Orchestra Hall

Abilene HS – opening 2018



Current Orchestra
storage space



Middle School Band — need for better storage and extra rehearsal space

Clack/Craig



Madison/Mann



Middle School Orchestra – need for appropriate space

Clack/Craig



Madison/Mann



Elementary Music & Art

Most elementary music classrooms in AISD are located in rooms designed as regular grade-level teaching spaces. Music and Art rooms require space for Orff instruments (xylophones), instruments, equipment, drying racks, art storage, etc.

Reagan Music



Austin Music



Taylor Music



Taylor Art



High School Art

High School Art rooms were limited in 1955-1960 to two classrooms with a small storage/kiln room. As interest at AHS/CHS increased, regular classrooms were added as art rooms. These spaces lack adequate storage of art projects, supplies, and work space. If possible, many rooms have been retrofitted with sinks and drains. Most elementary campuses who teach art in a portable classroom lack running water.



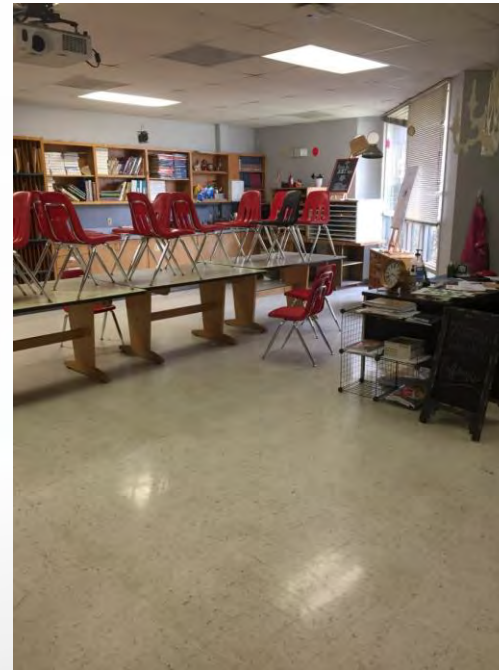
Middle School Art

Clack/Craig Art classrooms both have adequate spaces with a modern feel. Madison/Mann could use some modernization and the addition of storage solutions. The size and ventilation of the kiln room is inadequate for these spaces prompting teachers to move away from ceramics.

Madison/Mann
Art Room

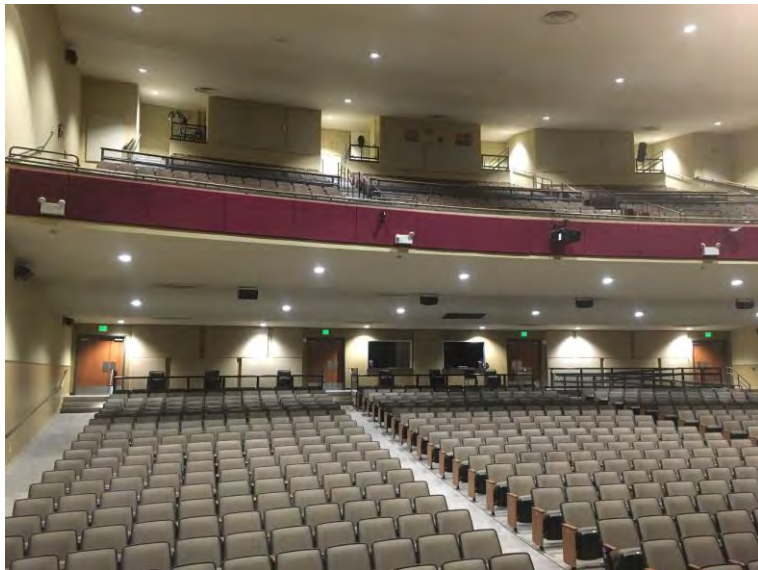


Clack/Craig Art
Room



2013 Bond Update to Auditoriums

We were able to abate the asbestos, paint, replace seating, update audience lighting to LED bulbs, bring the audience area up to ADA standards, and add an ADA compliant Technical Control Booth in each facility. The bond did not address the technical needs on the stage area.



Facility Needs & Improvements

Are facilities aging? Yes – some more than others

Are facilities too small for student population? – Yes, for the number of students and for the extra space needed compared to 1950s-1960s.

Are facilities missing? Yes and No. We make do without the extra storage and rehearsal spaces that most modern facilities possess.

Are facilities equitable? No. Some spaces are considerably smaller than other AISD campuses.

Facility Needs & Improvements

Need for modernization, facelift, and appropriate space for the number of students we serve.

Madison/Mann MS Orchestra:

Currently occupies a normal size speech classroom which is too small. Consequently, they have to use the stage which inhibits use during assemblies. It also doesn't allow theater classes a chance to utilize the facility. Orchestra shared with band hall until their program numbers grew to the current average of 151 students.

Cooper HS Orchestra:

currently in a space that was created from a breezeway in 1984. Ceiling height is too low and lockers occupy precious floor space in the rehearsal room.

Abilene HS/Cooper HS Band:

rooms were constructed 58-63 years ago prior to modern marching band requirements – no drumlines, no color guards, no drum major stands, no sound equipment, no props, etc.

Facility Needs & Improvements

Currently, the AHS drill team and color guard share the East Cafeteria. This facility has a Vinyl Composition Tile floor on concrete which is not ideal for dance.

The CHS color guard has use of a gym unless weather or off-season sports necessitates use by athletic teams. The drill team uses the South Cafeteria.





Questions?



Departmental Presentations: **Athletics**

Phil Blue,
Executive Director of Athletics

Who We Are

Abilene ISD Athletics

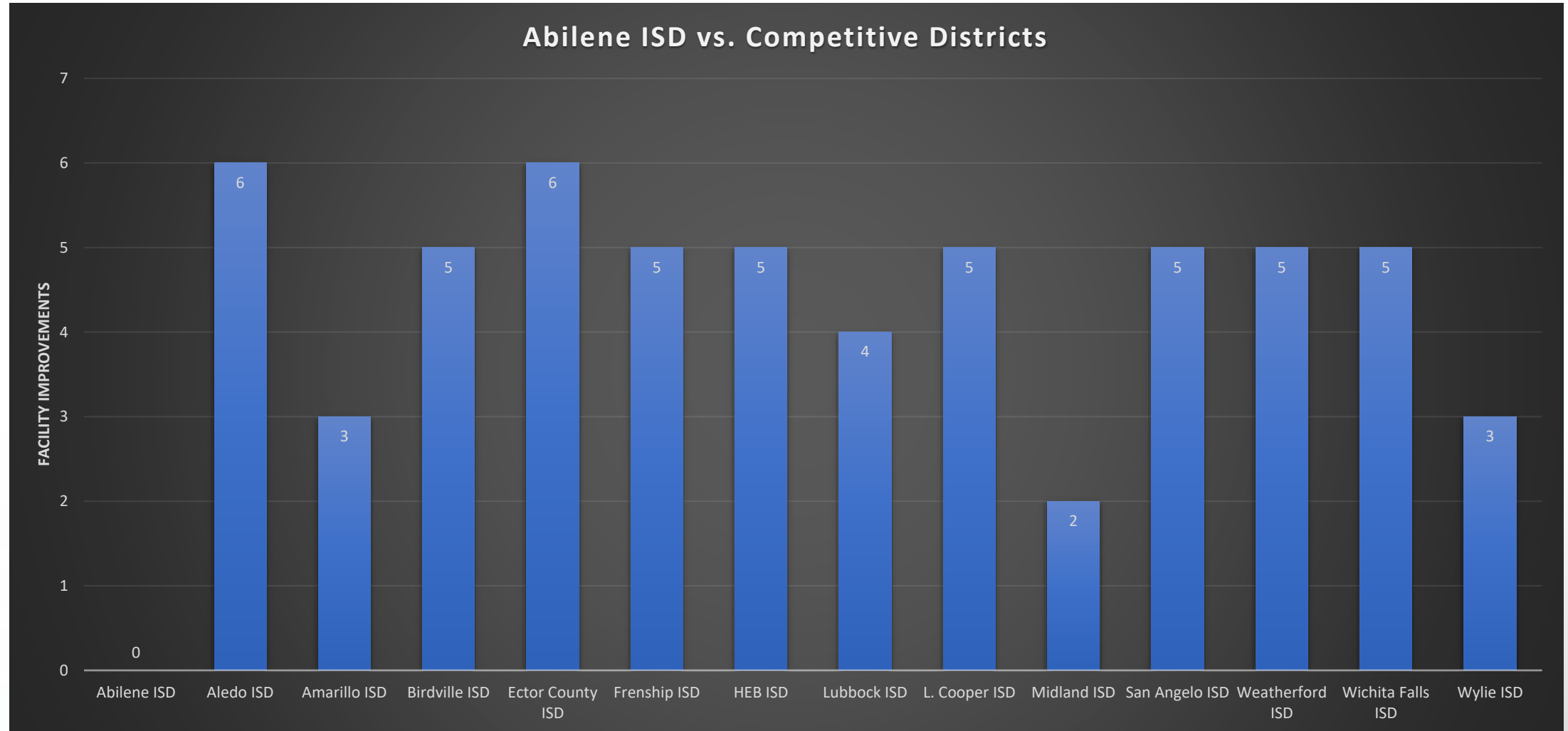
- 94 HS Teams in 13 Programs
- 160 MS Teams in 7 Programs
 - 254 Total Teams
- 1301 HS Students (32.4%)
- 1384 MS Students (38.3%)
 - 2685 Student-Athletes in AISD (35.2%)

Facility Comparison

Surrounding Competition Facility Comparison

School District	HS Turf	# of turf fields	BB Lights	SB Lights	Tennis Lights	MS Turf	MS Track
Abilene ISD	No	0	No	No	No	No	No - paint on grass
Aledo ISD	Yes	3	Yes	Yes	Yes	Yes	8 Lane All Weather
Amarillo ISD	Yes	1	No	No	No	Yes	No - paint on turf
Birdville ISD	Yes	1	Yes	Yes	Yes	No	4 Lane all Weather
Ector County ISD	Yes	2	Yes	Yes	PHS (Yes) OHS (No)	Yes (2)	(3) 6 Lane All Weather
Frenship ISD	Yes	5	Yes	Yes	Yes	No	8 Lane All Weather
L. Cooper ISD	Yes	3	Yes	Yes	Yes	No	8 Lane All Weather
Lubbock ISD	Yes	1	Yes	Yes	No	No	4 Lane All Weather
Midland ISD	Yes	1	No	No	Lee (Yes) MHS (No)	No	No - paint on grass
San Angelo ISD	Yes	1	Yes	Yes	Yes	No	Lee 4 Lane All weather Glenn uses SA Stadium Lincoln bus to LVHS
HEB ISD	Yes	2	Yes	Yes	Yes	No	(1) 8 Lane (4) 4 Lane All Weather
Weatherford ISD	Yes	1	Yes	Yes	Yes	No	8 Lane All Weather
Wichita Falls ISD	Yes	1	Yes	Yes	Yes	No	(2) 8 Lane (4) 6 Lane All Weather
Wylie ISD	Yes	2	No	No	Yes	No	8 Lane All Weather

Facility Comparison



Facility Implications

Turf Fields at CHS and AHS

- Excessive rain causes our programs to move football practices to:
Shotwell Stadium, Jim Ned High School, Primetime Facility, or The Field House Facility
- During Soccer season, the AHS and CHS practice fields are dormant and do not provide an adequate playing surface:
Our teams must work out a practice rotation and bus students to Shotwell Stadium
- Water restrictions make it difficult to maintain safe and durable grass playing fields.

Facility Implications

Lights at Tennis, Softball, and Baseball Facilities

- Tennis must move tournaments to Rose Park or other venues after dark
- Softball teams do not get to play complete JV games due to darkness
- Baseball teams experience scheduling challenges (Saturdays)

Baseball teams must play on 4 different days, Monday, Tuesday, Friday, Saturday. This causes a strain on our practice time for students and coaching staff

- Loss of academic time due to early start times.

Facility Implications

Track

- Middle School track workouts are on grass fields
- AISD does not have a track facility to host meets. AISD must rent ACU, McMurry University, or HSU to host a track meet.

Summary

- AISD athletic programs are not competing on a level playing field with other school districts as it relates to athletic facilities.



Questions?



Facility Assessment Overview

Huckabee

Elementary Schools & Early Childhood Centers

2013 Bond

Replaced:

- Bonham ES
- Bowie ES
- Johnston ES



Capital Improvements to:

- Lee ES
- Long ES
- Crockett ECC



Elementary Schools & Early Childhood Centers

Identified in 2013 Facility Assessment still to be considered:

Replacement:

- Austin ES
- Dyess ES
- Taylor ES

Additional Capital Improvements:

- Jackson ES
- Ortiz ES
- Reagan ES
- Thomas ES
- Ward ES
- Woodson ECC

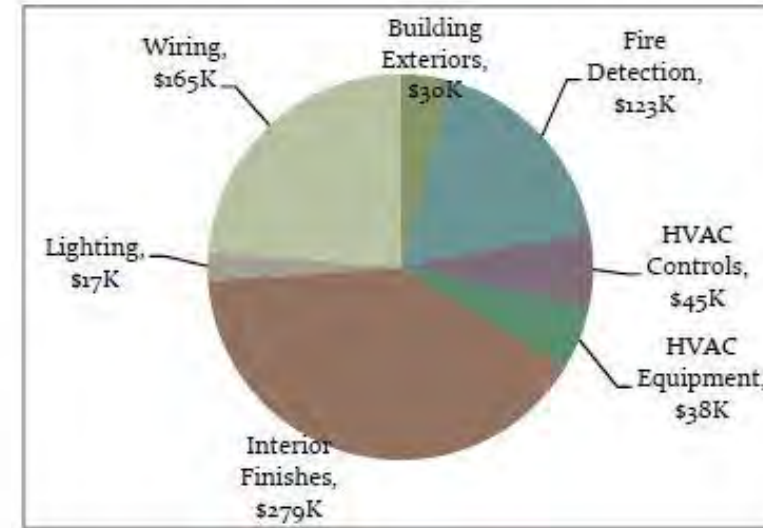


Figure 65: Austin Extended (2018) Needs Backlog

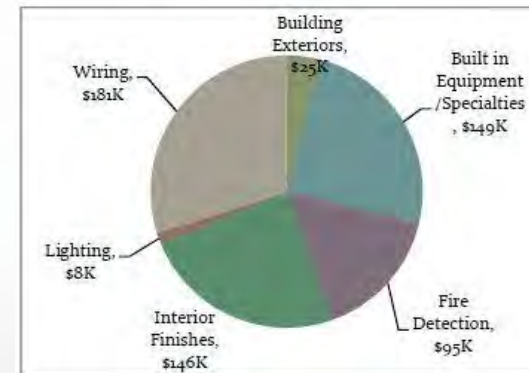


Figure 94: Jackson Extended (2018) Needs Backlog

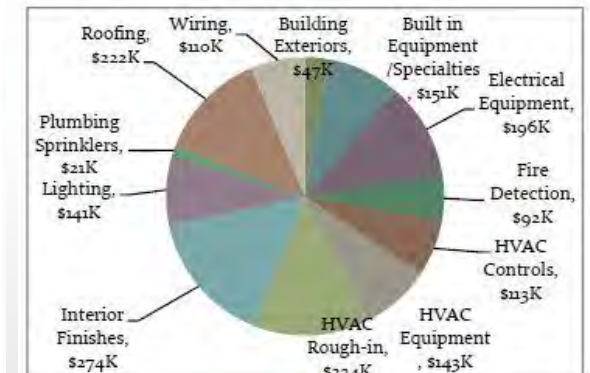


Figure 153: Woodson ECC Extended (2018) Needs Backlog

Middle Schools

2013 Bond Improvements

Clack MS & Craig MS:

- Paving
- Safety & Security

Madison MS & Mann MS:

- Classroom Addition
- Auditorium Improvements
- Accessibility
- Paving
- Safety & Security



TITLE LUTHER PARTNERSHIP
PARK HILL SMITH & COOPER

ABILENE ISD
2013 BOND ISSUANCE
FOR MIDDLE SCHOOLS
THROUGH 2015

PROUD
TO BE
AIDS

Middle Schools

Identified in 2013 Facility Assessment still to be considered:

Clack MS & Craig MS

- Interior Finishes
- MEP Items

Madison MS & Mann MS

- Exterior Items
- Interior Finishes
- MEP Items

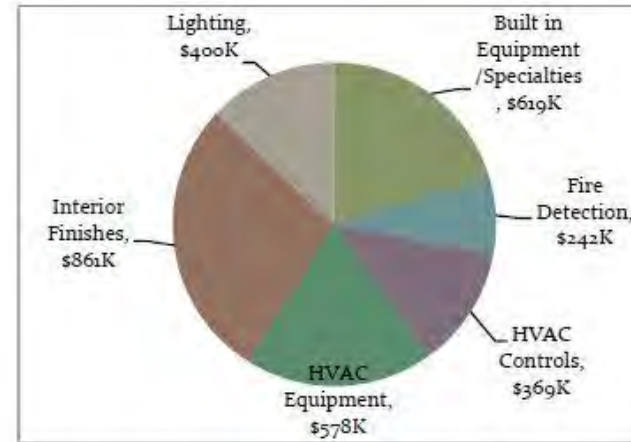


Figure 44: Clack Extended (2018) Needs Backlog

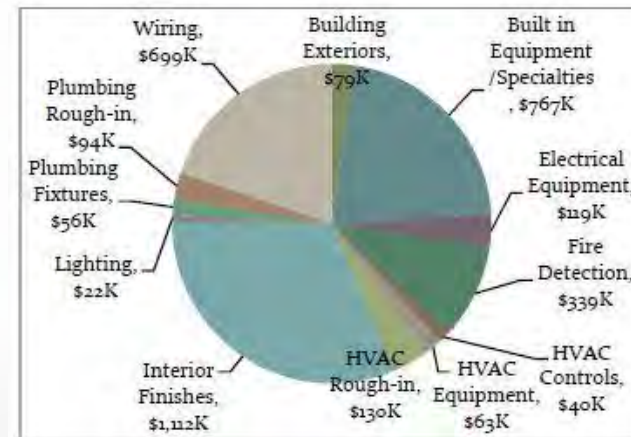


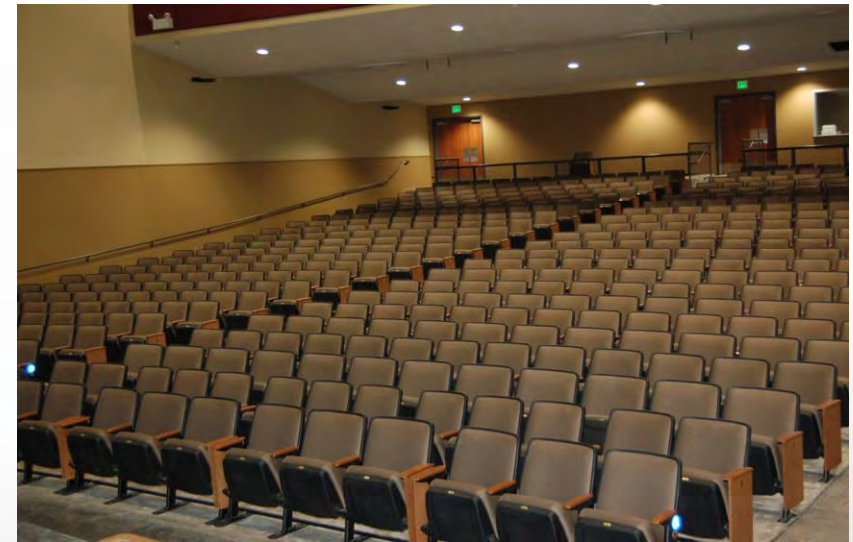
Figure 51: Madison Extended (2018) Needs Backlog

High Schools

2013 Bond Improvements

AHS & CHS

- Auditorium renovation
- Accessibility
- Roofing
- HVAC
- Lighting
- Safety & Security



High Schools

Identified in 2013 Facility Assessment still to be considered:

AHS & CHS

- Architectural
- MEP
- Fire Protection
- Technology

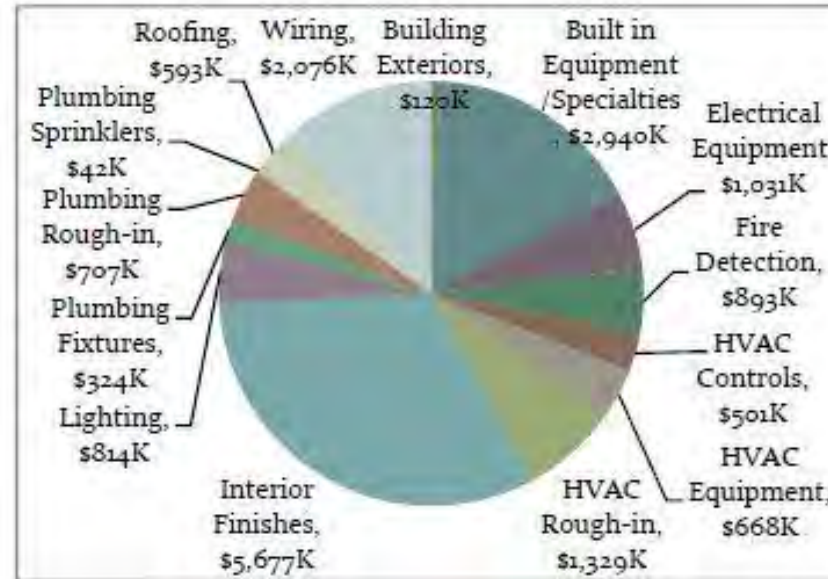


Figure 22: CHS Extended (2018) Needs Backlog



Figure 6: AHS Extended (2018) Needs Backlog

Support Facilities

Capital Improvement Considerations

- One AISD Center
- Maintenance & Transportation
- Ag Farm
- Planetarium
- Technology Center

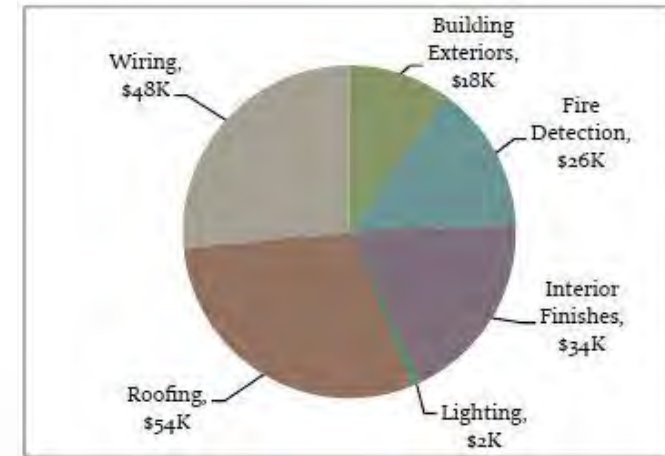


Figure 162: Ag Farm Extended (2018) Needs Backlog

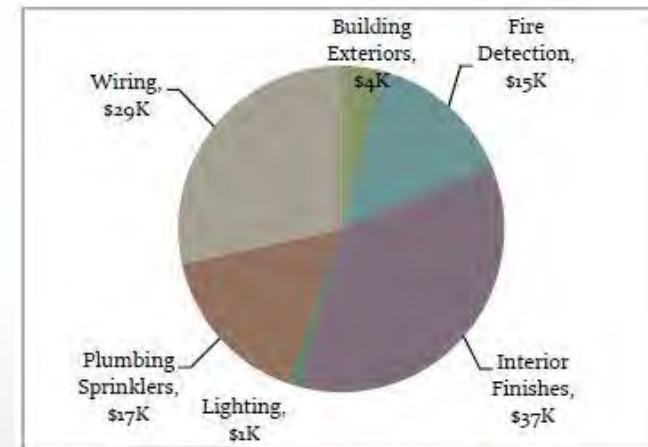


Figure 175: Planetarium Extended (2018) Needs Backlog

Education Centers

2013 Bond Improvements:

Jefferson & Woodson

- Access Controls
- Secure Vestibules
- Fire Alarm

Capital Improvement Considerations:

- Jefferson
- Woodson

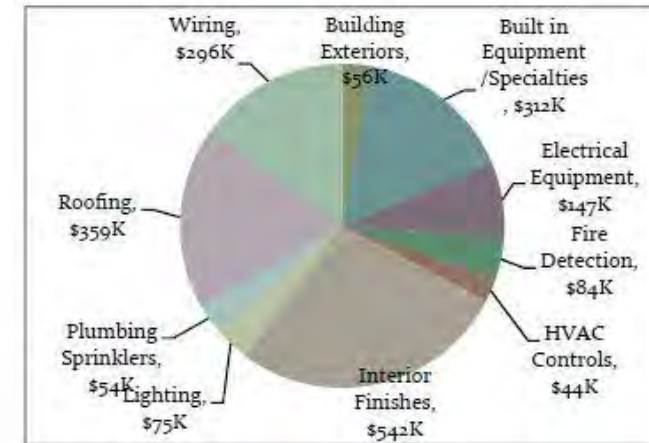


Figure 181: Jefferson Extended (2018) Needs Backlog

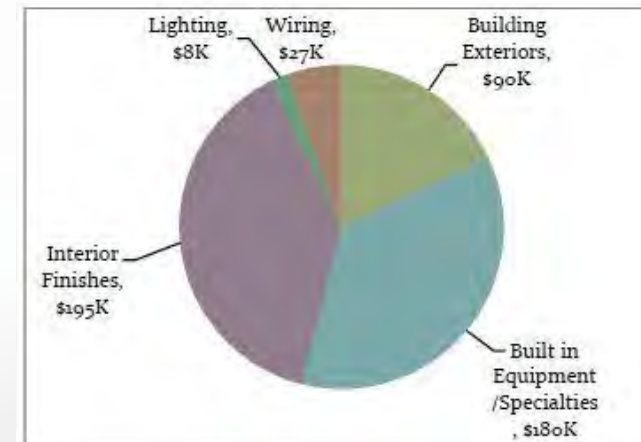


Figure 189: Woodson Extended (2018) Needs Backlog

Athletics

Capital Improvement Considerations:

- Shotwell Stadium

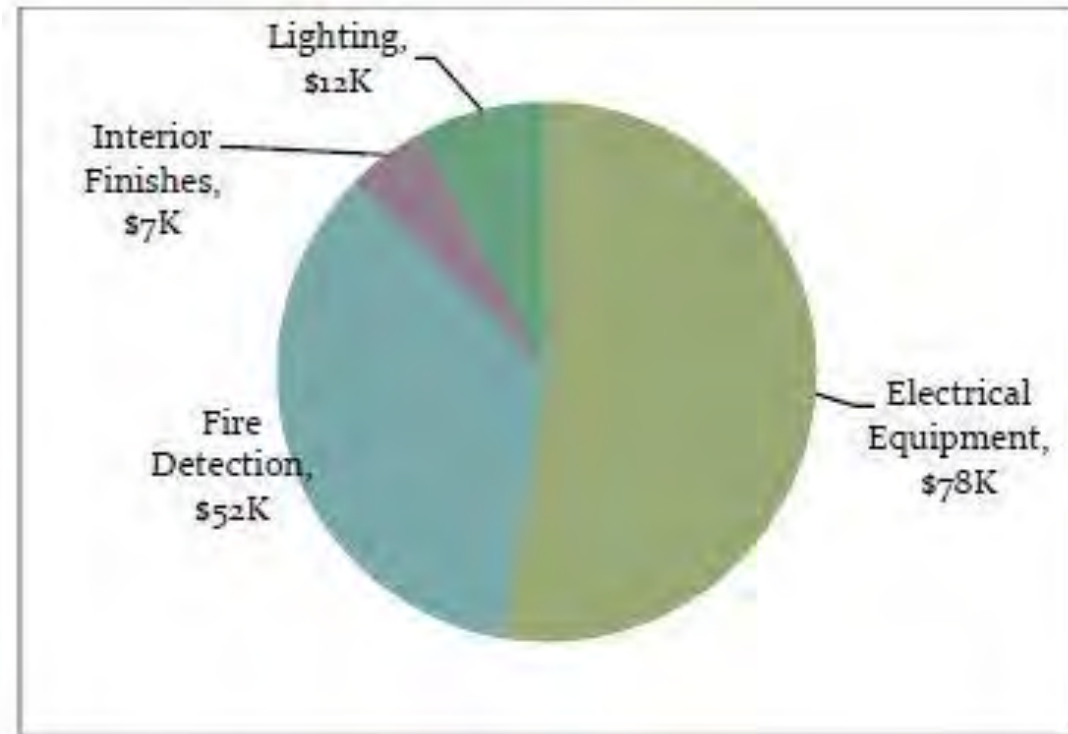


Figure 194: Shotwell Current Needs Backlog



Demographic Projections

Scott McLean,
Associate Superintendent
for Operations

Student Enrollment Trends

- Hispanic enrollment (currently 41.5%) increases less than 1% per year.
- White enrollment (40.4%) may have stopped declining.
- African-American enrollment (12.0%) is holding steady.
- Economically disadvantaged enrollment (65.5%) increased by over 1% per year over the last decade.

Historic Enrollment Data as of Fall 2017

AlSD has experienced an overall enrollment decrease of 661 students in the past 5 years.

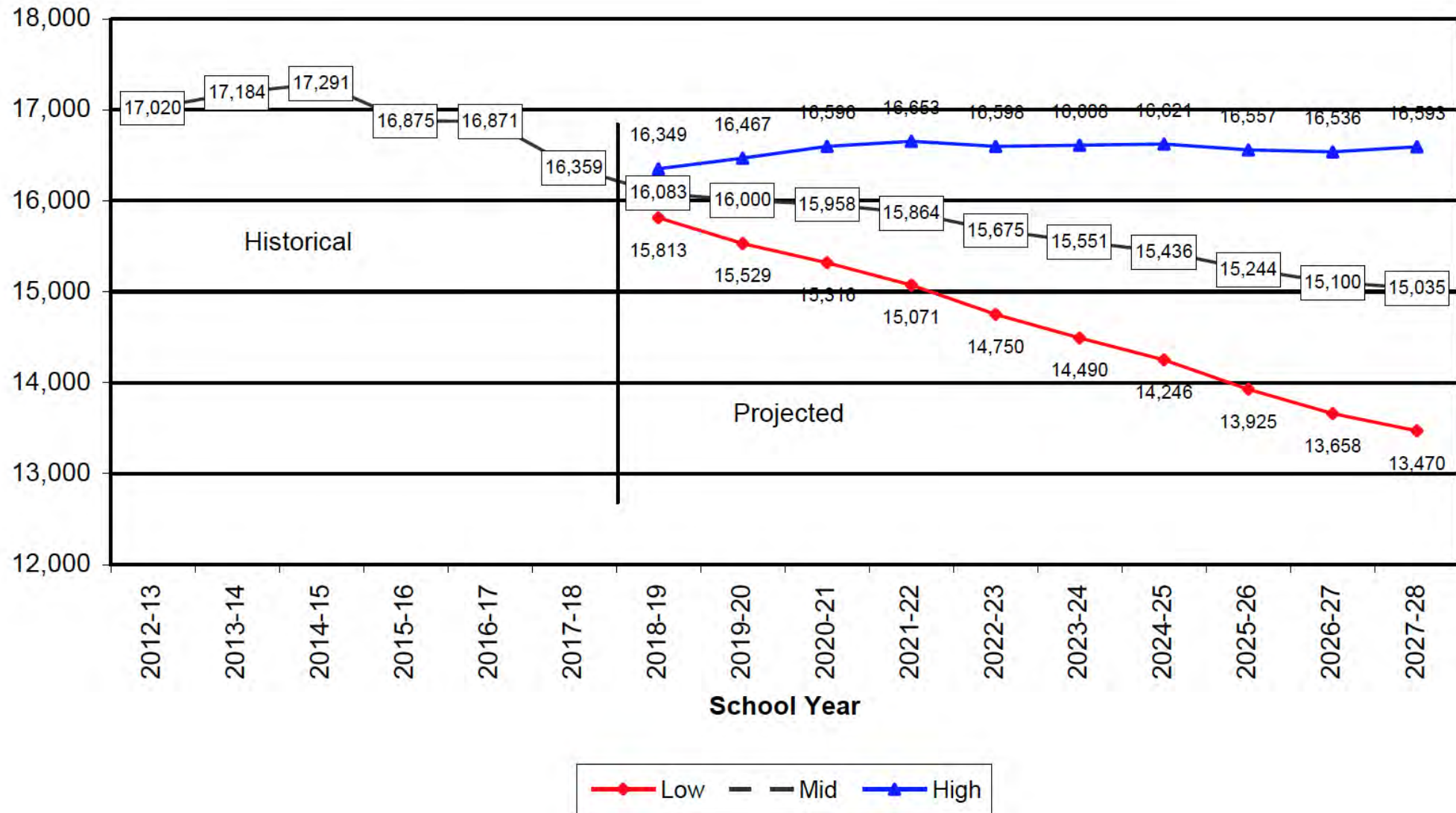
Fall	EC	PK	KG	1st	2nd	3rd	4th	5th	6th	7th	8th	9th	10th	11th	12th	All	EC>5	6>8	9>12
2012-13	190	861	1464	1535	1415	1388	1233	1247	1184	1227	1123	1182	1053	967	951	17,020	9333	3534	4153
2013-14	34	866	1534	1477	1438	1398	1357	1223	1236	1221	1214	1233	1054	998	901	17,184	9327	3671	4186
2014-15	156	838	1441	1479	1419	1377	1365	1310	1207	1248	1162	1322	1093	973	901	17,291	9385	3617	4289
2015-16	93	810	1376	1331	1385	1349	1279	1280	1293	1160	1205	1314	1092	1032	876	16,875	8903	3658	4314
2016-17	31	832	1327	1338	1287	1342	1339	1273	1250	1248	1171	1345	1109	1038	941	16,871	8769	3669	4433
2017-18	186	816	1237	1280	1224	1210	1264	1297	1215	1211	1180	1255	1102	985	897	16,359	8514	3606	4239

Annual Grade-to-Grade Change

	EC>EC	PK>PK	KG>KG	KG>1	1>2	2>3	3>4	4>5	5>6	6>7	7>8	8>9	9>10	10>11	11>12
'12 to '13	23	37	62	-44	-131	-6	-45	-34	-15	-7	-59	149	-207	-174	-158
'13 to '14	69	115	58	-68	-114	3	-59	6	4	13	-54	231	-113	-112	-147
'14 to '15	-10	6	-29	-42	-144	-3	-24	17	-2	-34	-60	231	-249	-85	-100
'15 to '16	-22	9	29	-74	-93	-42	-23	-23	2	-31	-43	130	-237	-61	-126
'16 to '17	-18	-13	-107	-36	-53	-48	-26	-20	-13	-19	-70	147	-173	-101	-72
5 Year Avg.	8	31	3	-53	-107	-19	-35	-11	-5	-16	-57	178	-196	-107	-121
Last 3	-17	1	-36	-51	-97	-31	-24	-9	-4	-28	-58	169	-220	-82	-99
Last 2	-20	-2	-39	-55	-73	-45	-25	-22	-6	-25	-57	139	-205	-81	-99

- Decline from kindergarten to first grade is uncommon in urban districts, particularly as students from private kindergarten enter public schools in first grade. However, AISD has had decline at that level.
- The increase from eighth to ninth grade is not growth; it shows that many freshman students do not earn enough credits in the first year of high school to be advanced to the tenth grade. Hence, the freshman class appears to be very large. This is very common, especially in urban districts.

Ten Year Projections: Three Scenarios

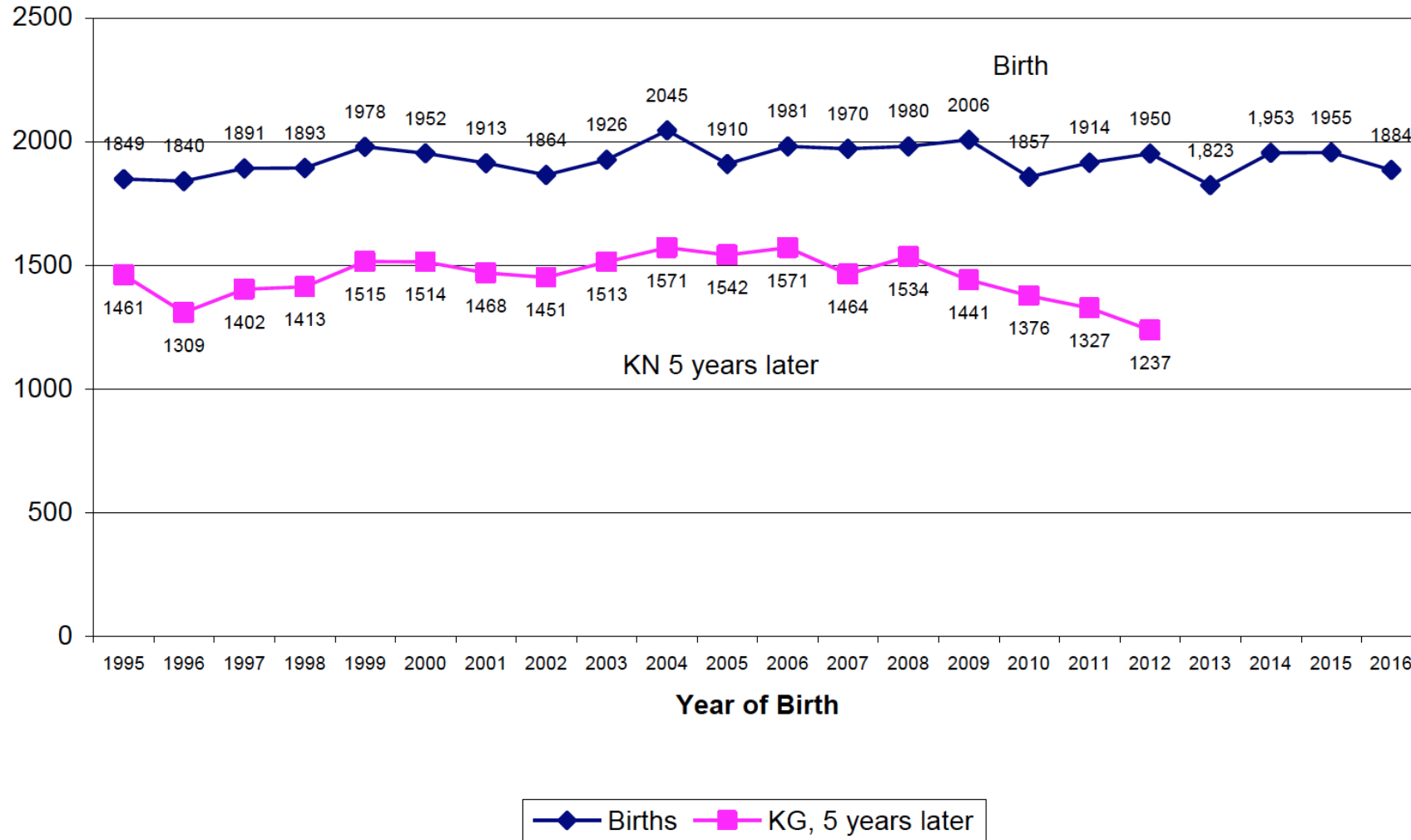


Ten Year Projections by Grade Level

Mid-range projection has district declining by almost 700 students over next five years and by over 1300 in the next ten years.

Fall	EC	PK	KG	1st	2nd	3rd	4th	5th	6th	7th	8th	9th	10th	11th	12th	All	EC>5	6>8	9>12
2018-19	151	747	1258	1184	1195	1192	1186	1249	1292	1193	1154	1340	1045	1012	885	16,083	8162	3639	4282
2019-20	161	725	1348	1205	1099	1163	1168	1170	1244	1270	1136	1314	1130	955	912	16,000	8039	3650	4311
2020-21	162	779	1349	1295	1120	1067	1139	1152	1165	1222	1213	1296	1104	1040	855	15,958	8063	3600	4295
2021-22	156	780	1300	1296	1210	1088	1043	1123	1147	1143	1165	1373	1086	1014	940	15,864	7996	3455	4413
2022-23	157	750	1315	1247	1211	1178	1063	1027	1118	1125	1086	1325	1163	996	914	15,675	7948	3329	4398
2023-24	157	759	1315	1262	1162	1179	1153	1048	1022	1096	1068	1246	1115	1073	896	15,551	8035	3186	4330
2024-25	157	759	1315	1262	1177	1130	1154	1138	1043	1000	1039	1228	1036	1025	973	15,436	8092	3082	4262
2025-26	157	759	1315	1262	1177	1145	1105	1139	1133	1021	943	1199	1018	946	925	15,244	8059	3097	4088
2026-27	157	759	1315	1262	1177	1145	1120	1090	1134	1111	964	1103	989	928	846	15,100	8025	3209	3866
2027-28	157	759	1315	1262	1177	1145	1120	1105	1085	1112	1054	1124	893	899	828	15,035	8040	3251	3744

Births & Kindergarten Enrollment



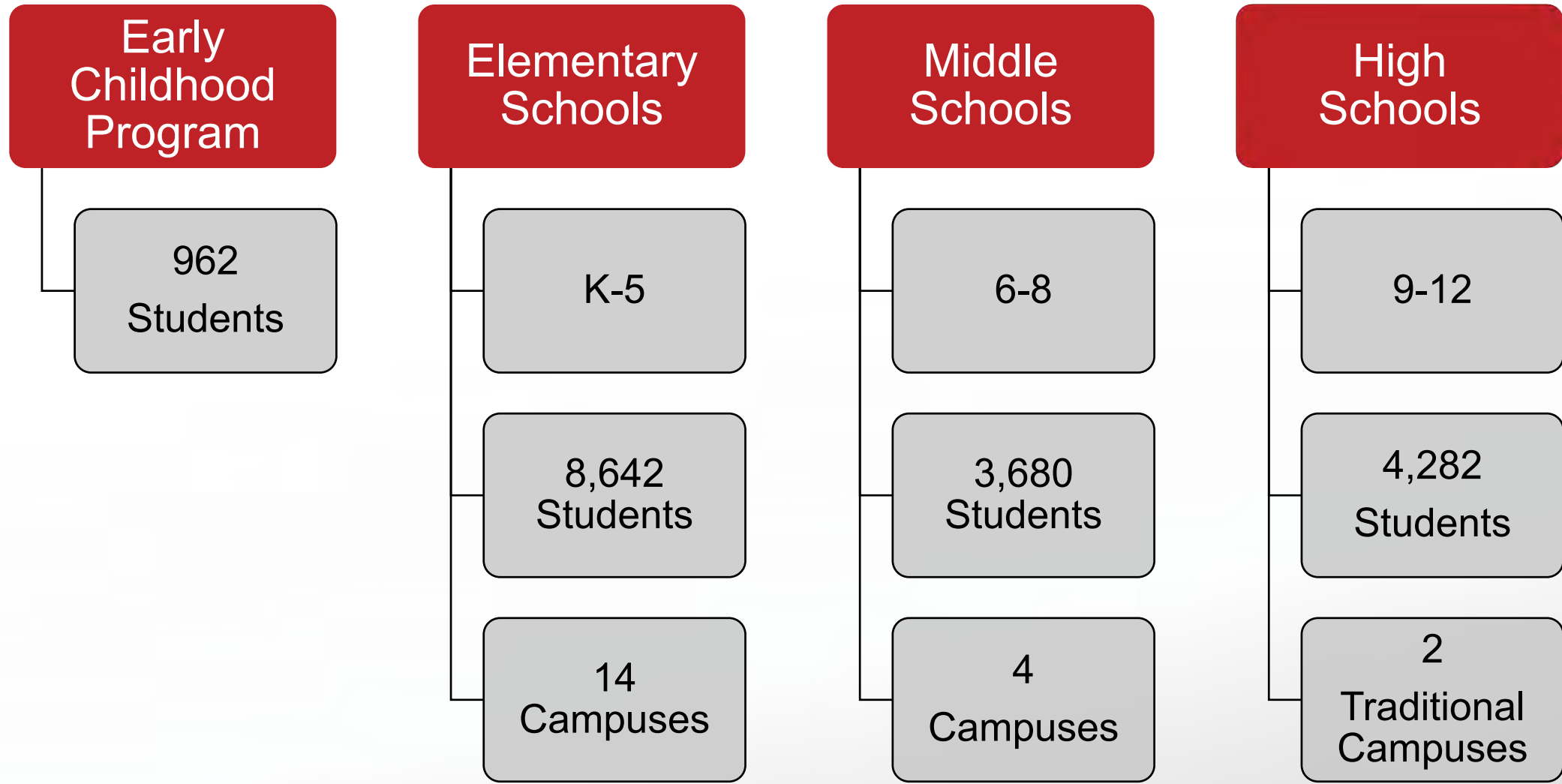
- The number of births has remained fairly constant (1900+), but the number of kindergarten students five years later has declined.
- The only areas that are growing in births at a substantial rate are in the south side of the district.



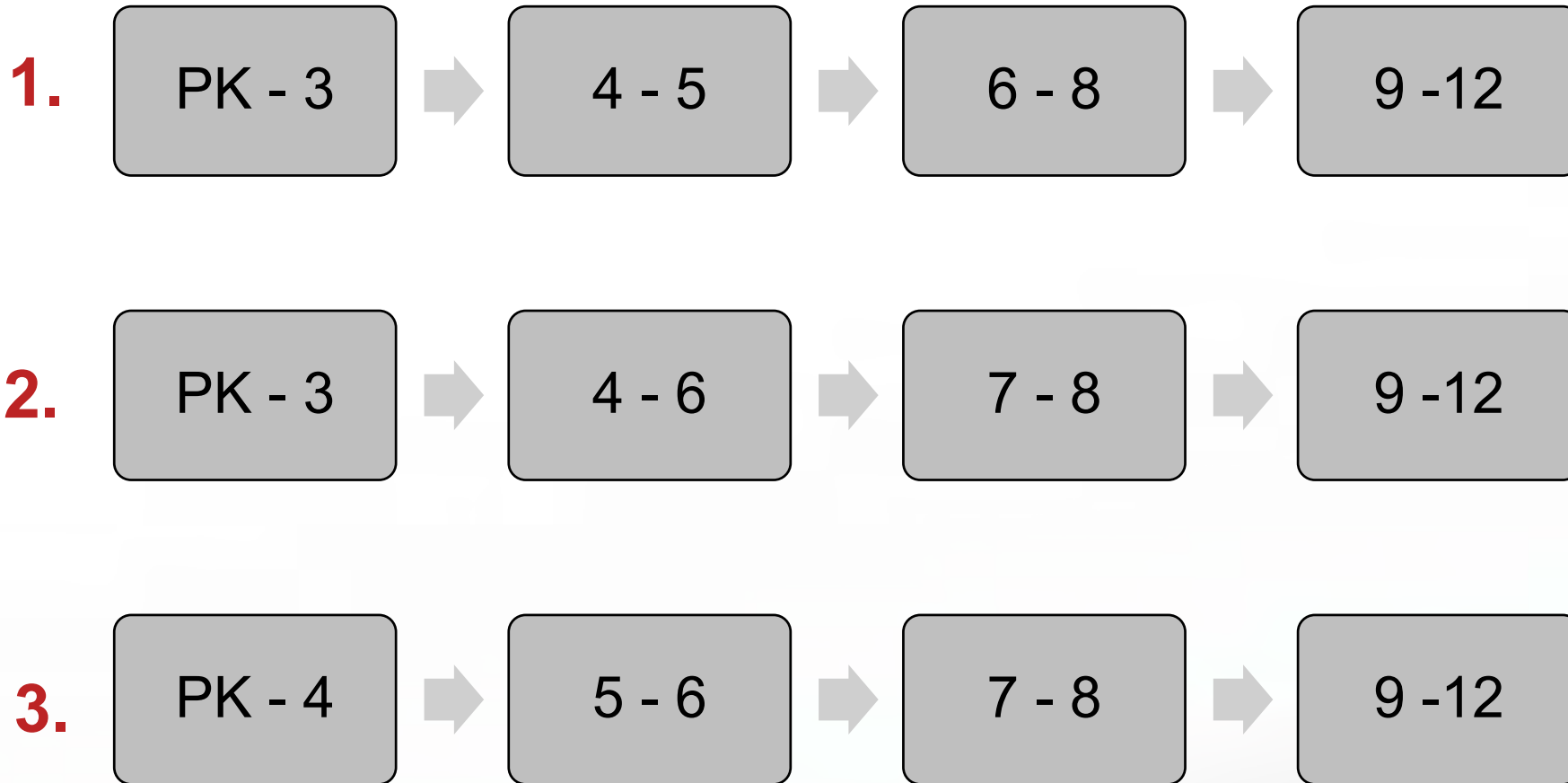
Grade Alignment Discussion

Dr. David Young,
Superintendent

Current Grade Configuration



Grade Alignment Options



Pro/Con
Discussion:

- **Instruction**
- **Student Experience**
- **Campus/
District
Operations**

Committee Brainstorm

What are other solutions to be explored by the committee?



Thank you! Questions?

Next Meeting

Thursday, May 10

6 – 8 p.m.

Cooper High School