

# Promethean

## Intro to NEW ActivPanels



- Connects to WIFI wirelessly
- Connects to Google Drive or Microsoft OneDrive
- Operates as a computer screen with touchscreen capabilities



### 1. INSTANT POWER ON:

Check the main power toggle on back left of panel to turn on. Press the Power button on the front and the screen turns on in less than a second! Following this, once the panel goes into standby mode, you may tap anywhere on the screen to turn the ActivPanel back on.

### 2. PROMETHEAN FLAME:

The Promethean Flame button opens the Unified Menu.

### 3. VOLUME:

The Volume buttons allow you to increase or decrease the audio coming from the bass-enhanced speakers.

### 4. SOURCE:

The Source button allows you to switch to any device that is connected to the ActivPanel.

### FREEZE: Available on Remote

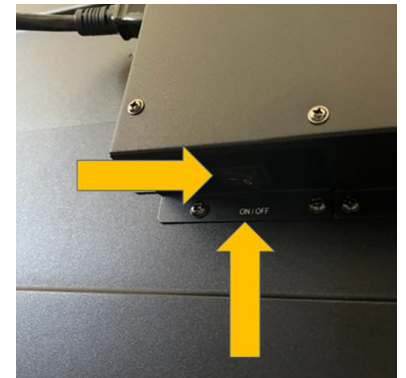
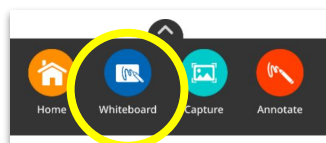
The Freeze button freezes the current image on the screen.

### BLANK SCREEN: Available on Remote

Use to instantly have nothing visible on the ActivPanel.

## Whiteboard

Swipe the edge of the screen to pull up the menu to find the **Whiteboard** app. The Whiteboard app is an instant whiteboard with several annotation tools, math tools, concept maps, infinite space, and the ability to turn any content into a collaborative activity with multiuser mode.



## Main Panel Power Source

Plug in panel to electrical power source and ensure power toggle is switched on.

## Included Accessories

- Wireless Keyboard with Trackpad
- Logitech Webcam
- Panel Remote
- Panel Pen (for annotation)



# Promethean

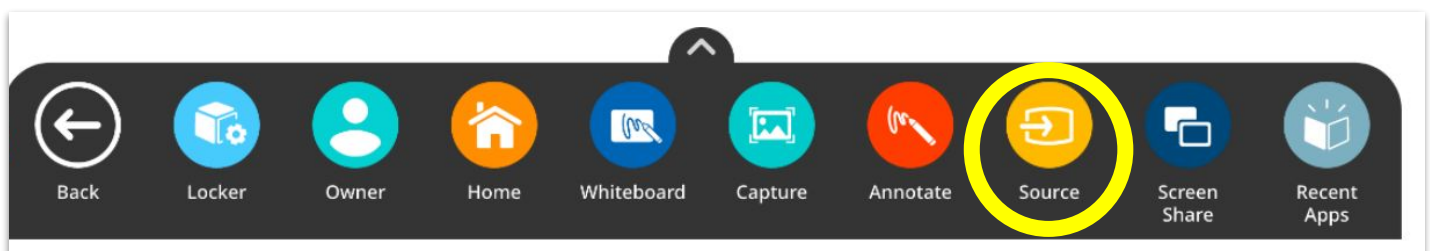
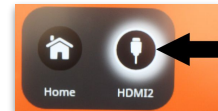
## Intro to NEW ActivPanels

### Display PC Computer - Switch Source



If you want to display the computer or another source do the following after turning the panel on:

1. Turn on the micro-computer on the back of the ActivPanel.
2. Select the **source button** on the front of the screen, remote, or by either swiping from the edge of the screen or touching the source button.
3. Select the **HDMI option**.
4. Log into the computer using your district credentials.
5. To switch back to the promethean panel screen, select Source again and select the Home button.



# Promethean

## Intro to NEW ActivPanels

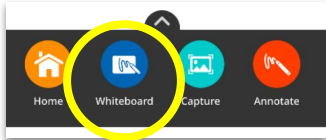
### Included Accessories

- Wireless Keyboard with Trackpad
- Logitech Webcam
- Panel Remote
- Panel Pen (for annotation)



## Whiteboard

Swipe the edge of the screen to pull up the menu to find the **Whiteboard** app. The Whiteboard app is an instant whiteboard with several annotation tools, math tools, concept maps, infinite space, and the ability to turn any content into a collaborative activity with multiuser mode.

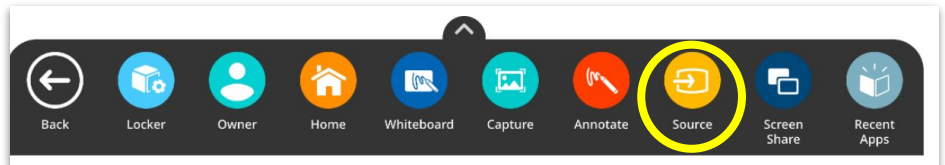
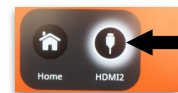


## Display PC Computer - Switch Source



If you want to display the computer or another source do the following after turning the panel on:

1. Turn on the micro-computer on the back of the ActivPanel.
2. Select the source button on the front of the screen by either swiping from the edge of the screen or touching the source button.
3. Select the **HDMI option**.
4. Log into the computer using your district credentials.
5. To switch back to the promethean panel screen, select Source again and select the Home button.



#### 1. INSTANT POWER ON:

Check the main power toggle on back left of panel to turn on. Press the Power button on the front and the screen turns on in less than a second! Following this, once the panel goes into standby mode, you may tap anywhere on the screen to turn the ActivPanel back on.

#### 2. PROMETHEAN FLAME:

The Promethean Flame button opens the Unified Menu.

#### 3. VOLUME:

The Volume buttons allow you to increase or decrease the audio coming from the bass-enhanced speakers.

#### 4. SOURCE:

The Source button allows you to switch to any device that is connected to the ActivPanel.

#### FREEZE: Available on Remote

The Freeze button freezes the current image on the screen.

#### BLANK SCREEN: Available on Remote

Use to instantly have nothing visible on the ActivPanel.